

Innovating Safety for Every Mile

**WELLDON**

Ningbo Welldon Infant And Child Safety  
Technology Co.,Ltd.  
[www.welldon.com](http://www.welldon.com)

24V1.1

WELLDON

COCOON TRAVEL 2  
**USER MANUAL**



WD021



**EN** Scan for user manual

**DE** Scan für Benutzerhandbuch

**FR** Scannez pour le manuel d'utilisation

**IT** Scansiona per il manuale utente

**ES** Escanear para el manual del usuario

**RU** сканируйте для руководства пользователя

**TH** สแกนคู่มือผู้ใช้

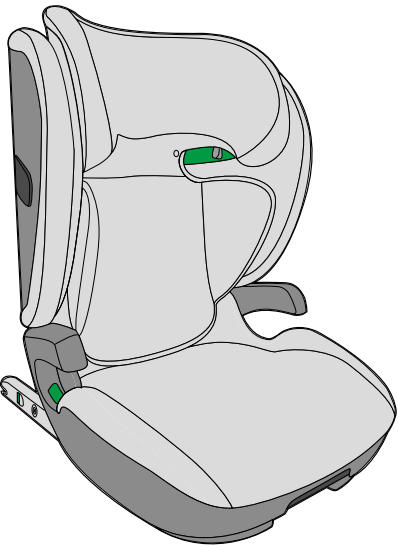
**AR** يحاشر ليل ايلحلح لسم

**HE** סרוק להורדת הוראות שימוש

**more**

- 
- 
- 

This child safety seat complies with UN Regulation No. 129/03.  
Please read the full instructions carefully before installation and using this product.



COCOON TRAVEL 2  
WD021

**WELLDON**

i-Size Booster Seat  
100cm-135cm  
Specific Vehicle Booster Seat  
135cm-150cm

**030110**

UN-Regulation No.129/03

This high-back booster seat features ISOFIX for easier installation, ensuring maximum safety and comfort for your baby during travel.

Recommended for:  
Age: From 3 years to approx. 12 years  
Stature: 100-150 cm  
Only suitable for vehicle seats with automatic three-point belts approved by UN Regulation No. 16 or a comparable standard.

Tested and Certified According to ECE R129				
Model No.	Stature	Orientation	Installation	Approval Type
COCOON TRAVEL 2 WD021	100-135cm	Forward	Vehicle 3-point belt/ Vehicle 3-point belt +ISOFIX	Universal
	135-150cm	Forward	Vehicle 3-point belt/ Vehicle Fix+3-point Belt	Special Vehicle

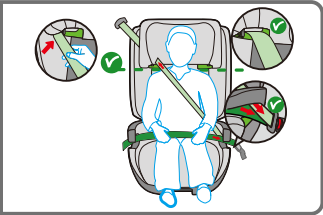
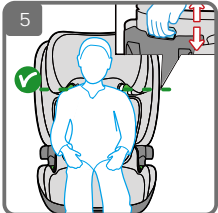
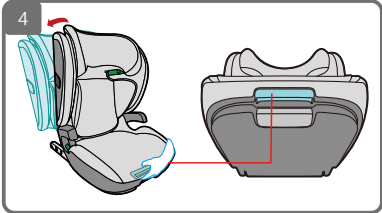
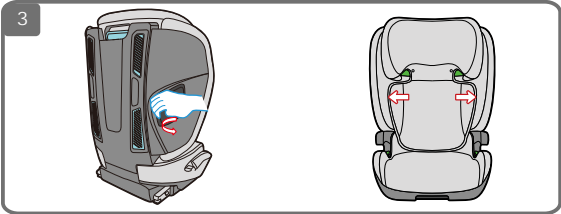
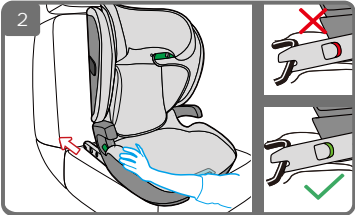
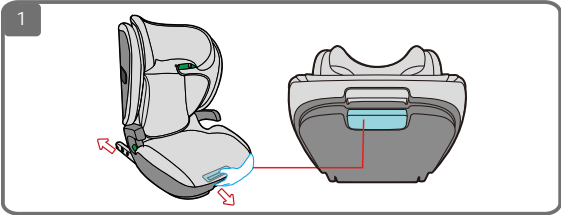
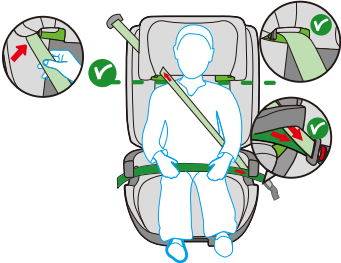
\*ECE = European Standard for Safety Equipment  
The child safety seat has been designed, tested, and certified according to the requirements of the European Standard for Child Safety Equipment (ECE R129). The seal of approval "E" (in a circle) and the approval number are located on the approval label (sticker on the child safety seat).  
This approval will be invalidated if any modifications are made to the child safety seat. Only the manufacturer is permitted to make modifications to the child safety seat.

Forward Facing Only

It is not recommended to install child safety seats in front seats with airbags.

Green colors indicate optional installation locations where a 3-point harness system is required.

It is recommended to install on the back seat.



1.Warning..... 6

2.Product Description.....7-8

3.Installation With Booster Seat..... 9-10

4.Removing The Seat.....11-12

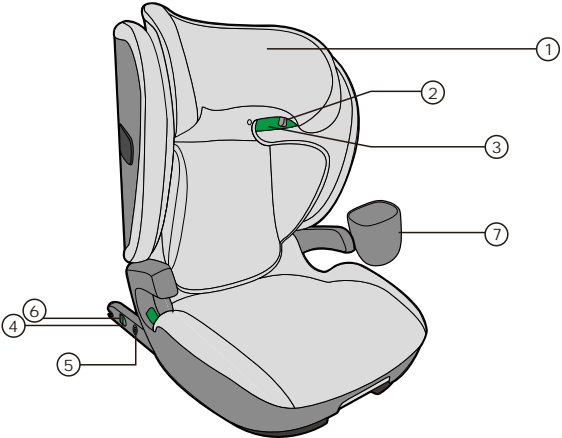
5.Care And Cleaning.....13

6.Warranty..... 14

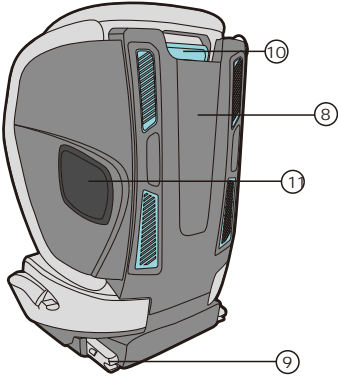
READ USER MANUAL PRIOR TO  
INSTALLING AND USING  
THIS HIGH-BACK BOOSTER.  
KEEP INSTRUCTIONS FOR FUTURE USE.

1. The rigid items and plastic parts of the high-back booster seat should be located and installed so that they are not likely to become trapped by a movable seat or in the vehicle's door during everyday use.
2. Any straps securing the restraint to the vehicle should be tight. Straps restraining the child should be adjusted to fit the child's body, and straps should not be twisted.
3. It is important to ensure that the lap straps are positioned lower than the baby's hips.
4. High-back booster seat should be replaced if it has been subjected to violent stresses in an accident.
5. DO NOT leave your child unattended in the booster seat.
6. Secure any luggage or other objects that could cause injuries in the event of a collision.
7. DO NOT use the booster seat without the fabric cover.
8. DO NOT replace the cover of the high-back booster seat with anything other than the one recommended by the manufacturer, as the cover is an integral part of the restraint system's safety performance.
9. Refer to the vehicle manufacturer's handbook for the use of an "i-Size ECRS".

## 2.Product Description

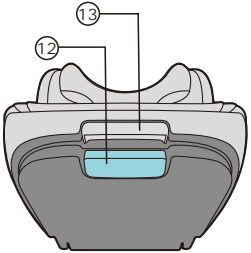


- 1. Headrest
- 2. Seat Belt Retainer
- 3. Shoulder Belt Guide
- 4. ISOFIX Unlocking Button
- 5. ISOFIX Double-locking Button
- 6. ISOFIX Installation Indicator
- 7. Cup Holder



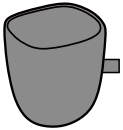
- 8. Backrest
- 9. ISOFIX Connect Locking Arms
- 10. Headrest Height Adjusting Handle
- 11. Side Wings Adjusting Handle

## 2.Product Description

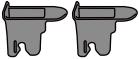


- 12. ISOFIX Releasing Handle
- 13. Recline Angle Adjusting Handle

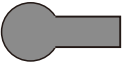
### ACCESSORIES



**Cup Holder**  
Ensures that both parents and children have easy access to beverages while on the move



**ISOFIX Guide**  
Insert the ISOFIX guides onto the car's anchors to attach the child seat securely.



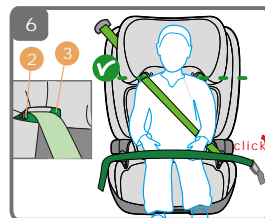
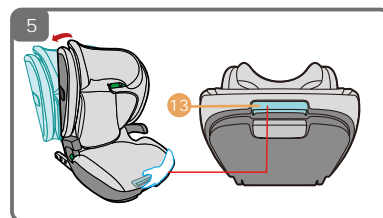
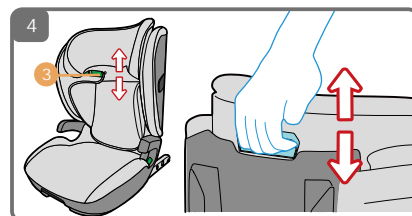
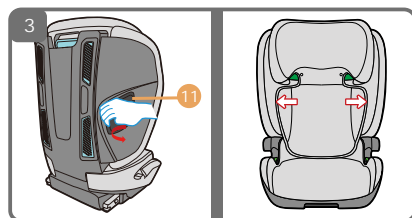
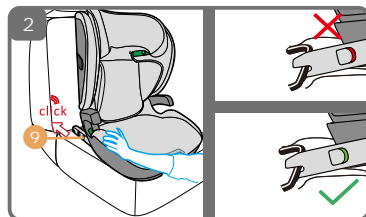
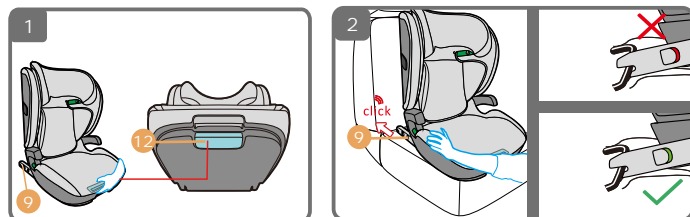
**Fabric Insert Tool**  
This fabric assist tool is designed to help with installing fabric covers.



**Lumbar Cushion**  
Providing lower back support during travel.

### 3. Installation With Booster Seat

### 3. Installation With Booster Seat



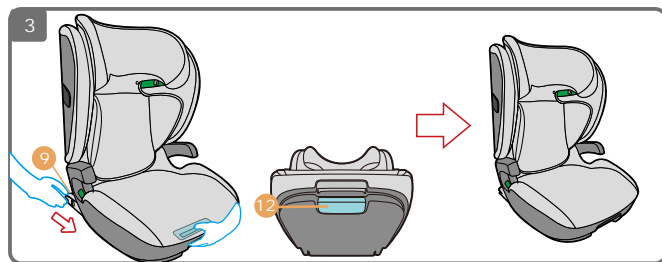
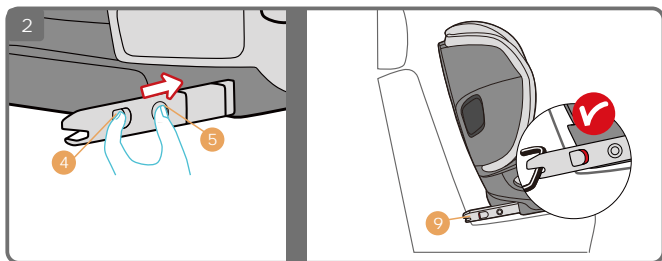
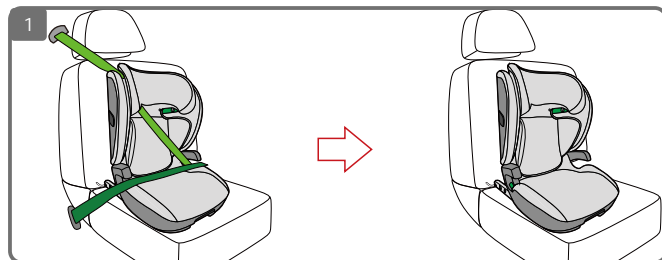
- 1 Pull the ISOFIX releasing handle (12) to extend ISOFIX connect locking arms (9) to the maximum length automatically.
- 2 Insert the ISOFIX connect locking arms (9) into the ISOFIX fixture points in the vehicle seat. Ensure that there is a "click" sound and a green indication on both ISOFIX connect locking arms (9).
- 3 Pull the side wings adjusting handle (11) to adjust the size according to the car's interior situation and the child's size. It can also be adjusted on one side.
- 4 Adjust the headrest (3) to the appropriate height according to the child's height.

Notice Ensure the shoulder belt guide (3) is at the same height as the child's shoulders.

- 5 Pull the recline angle adjusting handle (13) to adjust the back of the seat to different angles.  
Adjust the seat into proper position before fastening the belt on the child (there are 4 positions).
- 6 Disengage the seat belt retainer (2). Thread the seat belt through the shoulder belt guide (3) of the booster seat. After ensuring the seat belt is correctly fastened on the booster seat, lock the seat belt until you hear a "click."

CAUTION! DO NOT twist the seat belt.

## 4. Removing The Seat



## 4. Removing The Seat

- 1 Unfasten the seat belt, ensuring the belt is removed from the shoulder belt guide (3).
- 2 Press the ISOFIX unlocking button (4) and the ISOFIX double-locking button (5) simultaneously. When the ISOFIX installation indicator (6) shows red, it means the ISOFIX connecting arms (9) are disconnected from the fixture points.
- 3 Pull the ISOFIX releasing handle (12) and push the ISOFIX connecting arms (9) into the booster seat .



## 5. Care And Cleaning

### IMPORTANT USAGE INSTRUCTIONS

- ❶ Indicator Check: Ensure the indicators are green before you drive.
- ❷ Seat Positioning: Make sure the back of the seat is touching the backrest of the vehicle seat and the ISOFIX connectors are pushed inside the seat as far as possible. The red surface on top of the ISOFIX release handle must not be visible during driving.

### CLEANING



WARNING! Please be sure to use only the original cover, as the cover is crucial for the secure operation of the system. Replacement seat covers are available from your retailer, agent, or the manufacturer.

The high-back booster seat must not be used without the cover.

- The cover can be removed and washed with a mild detergent delicate cycle (30°C). Follow the instructions on the washing label of the cover. The cover's colors may fade if washed at temperatures higher than 30°C. Do not spin dry, and never use an electric dryer as the fabric may separate from the padding.
- Clean plastic parts with soapy water. Do not use harsh cleaning agents such as solvents.

## 6. Warranty

We provide a 7-year warranty for this child car seat against manufacturing or material defects. The warranty period begins on the date of purchase. To validate the warranty, please keep the invoice and register your product on [welldon.com](http://welldon.com).

### The Warranty Does Not Cover:

- Natural signs of wear and damage resulting from excessive stress.
- Damage resulting from inappropriate or improper use.
- Color fastness may diminish when exposed to UV radiation. However, all fabrics fade when exposed to UV radiation. This is not a material defect but a normal sign of wear that is not covered by the warranty.

For warranty claims, please contact your retailer directly. They will provide the necessary advice and support. When processing claims, product-specific depreciation rates will be applied. Please refer to our General Terms and Conditions, which are available from your retailer.