

Innovating Safety for Every Mile

WELLDON

Ningbo Welldon Infant And Child Safety
Technology Co., Ltd.
www.welldon.com

24V1.1

WELLDON

ENCORE PRO USER MANUAL



WD025



This child car seat features ISOFIX for easier installation, ensuring maximum safety and comfort for your baby during travel.

Recommended for:
Age: From approx. 15 months up to 12 years
Stature: 76-150cm
This seat can only be installed in a forward-facing position in the vehicle.
UN Regulation No. 16 or a comparable standard.

Tested and Certified According to ECE R129				
Model No.	Stature	Orientation	Installation	Approval Type
ENCORE Pro WDO25	76-105cm	Forward	ISOFIX +Top Tether +Harness	i-Size
	100-150cm	Forward	Vehicle 3 point belt+ ISOFIX	i-Size
			Vehicle 3 point belt	Booster Seat

*ECE = European Standard for Safety Equipment
The child safety seat has been designed, tested, and certified according to the requirements of the European Standard for Child Safety Equipment (ECE R129). The seal of approval "E" (in a circle) and the approval number are located on the approval label (sticker on the child safety seat).
This approval will be invalidated if any modifications are made to the child safety seat. Only the manufacturer is permitted to make modifications to the child safety seat.



- EN Scan for user manual
- DE Scan für Benutzerhandbuch
- FR Scannez pour le manuel d'utilisation
- IT Scansiona per il manuale utente
- ES Escanear para el manual del usuario
- RU сканируйте для руководства пользователя
- TH สแกนคู่มือผู้ใช้

إحضر دليل المستخدم

סרוק להורדת הוראות שימוש

more

-
-
-

This child safety seat complies with UN Regulation No. 129/03. Please read the full instructions carefully before installation and using this product.

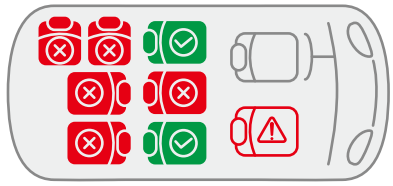


ENCORE pro
WD025


Notice
This is an i-Size Enhanced Child Restraint System (ECRS), approved by UN Regulation No.129. It is designed for use in i-Size compatible vehicle seating positions, as indicated by vehicle manufacturers in the vehicle user manual. If you are unsure about compatibility, please consult either the manufacturer of the Enhanced Child Restraint System or your retailer.

Important Safety Notice:
DO NOT use this Enhanced Child Restraint System in seating positions where an active frontal airbag is installed.

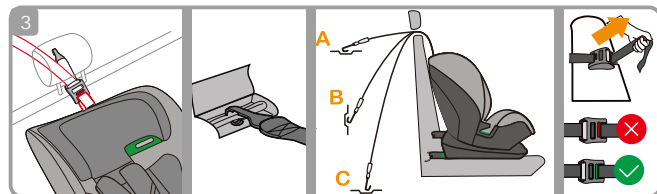
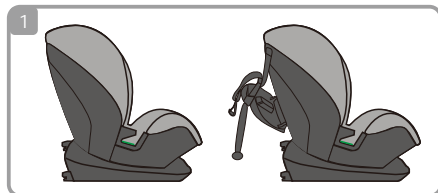
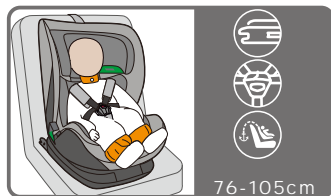
Use In The Vehicle



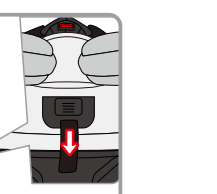
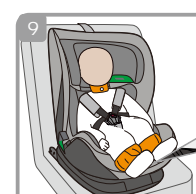
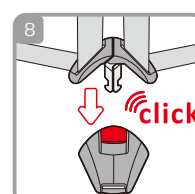
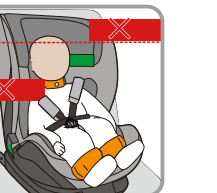
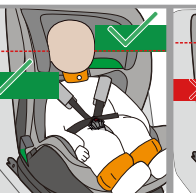
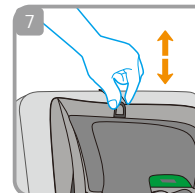
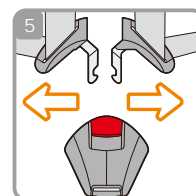
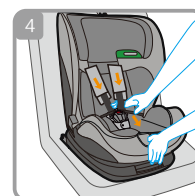
Proper seating positions for your child car seat.

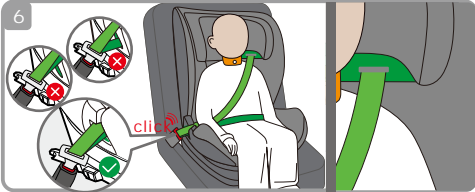
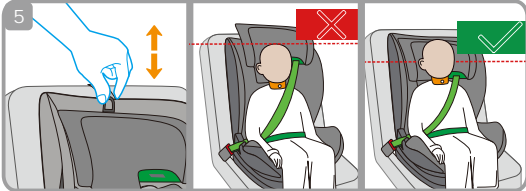
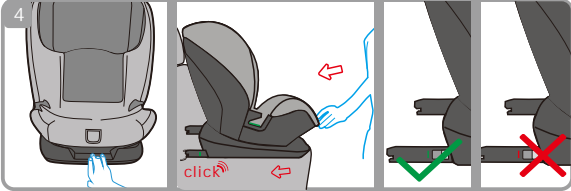
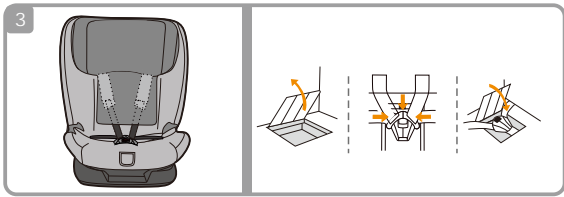
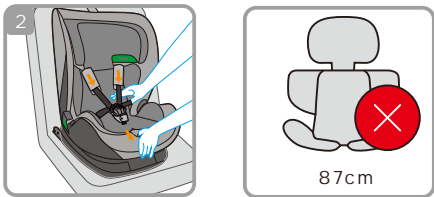
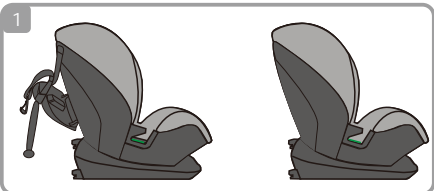
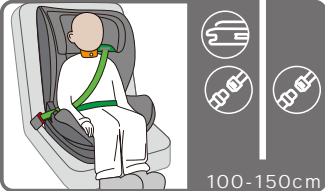
 If you need to install the seat in the front passenger seat, please ensure that the airbag is deactivated to avoid serious injury.

Quick Installation Guide



Quick Installation Guide





1.Warning..... 08

2.Product Description..... 09-10

3.Basic Information..... 11-12

4.Instruction for Stature 76-105cm.....13-16

5.Instruction for Stature 100-150cm..... 17-18

6.Removing The Seat..... 19-20

7.Important Safety Precautions..... 21

8.Care and Cleaning.....22

9.Warranty.....23

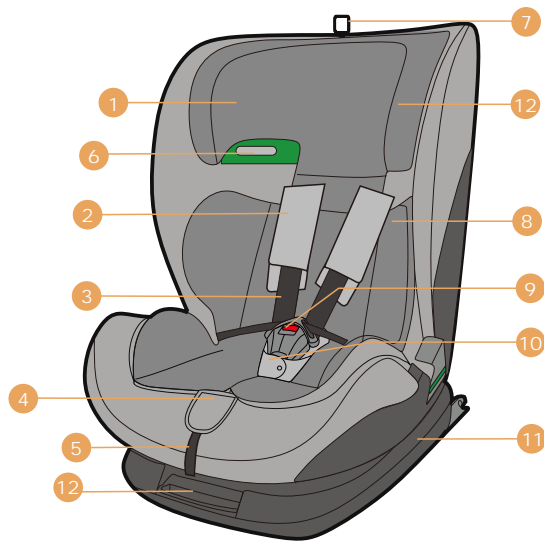
10.Safety Checklist.....24

READ USER MANUAL PRIOR TO INSTALLING
AND USING THIS BABY CAR SEAT.
KEEP THIS MANUAL FOR FUTURE USE.

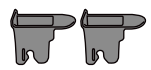
1. The rigid items and plastic parts of the child car seat should be located and installed so that they are not likely to become trapped by a movable seat or in the vehicle's door during everyday use.
2. Any straps securing the restraint to the vehicle should be tight. Straps or impact shields restraining the child should be adjusted to fit the child's body, and straps should not be twisted.
3. It is important to ensure that the lap straps are positioned lower than the baby's hips.
4. The child car seat should be replaced if it has been subjected to violent stresses in an accident.
5. DO NOT leave your child unattended in the baby car seat.
6. Secure any luggage or other objects that could cause injuries in the event of a collision.
7. DO NOT use the car seat without the fabric cover.
8. DO NOT replace the cover of the baby car seat with anything other than the one recommended by the manufacturer, as the cover is an integral part of the restraint system's safety performance.
9. Refer to the vehicle manufacturer's handbook for the use of an "i-Size ECRS".

2.Product Description

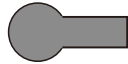
2.Product Description



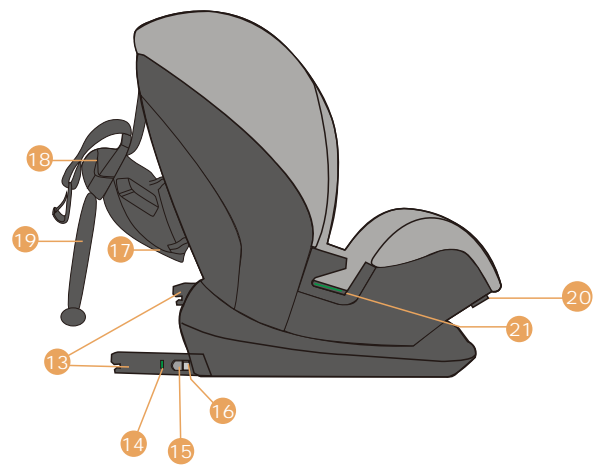
- 1. Headrest
- 2. Shoulder Pads
- 3. Shoulder Straps
- 4. Harness Release Button
- 5. Harness Adjusting Strap
- 6. Shoulder Belt Guide
- 7. Headrest Height Adjustment Lever
- 8. Inner Cushion
- 9. Buckle
- 10. Crotch Pad
- 11. Car Seat Base
- 12. ISOFIX Release Handle



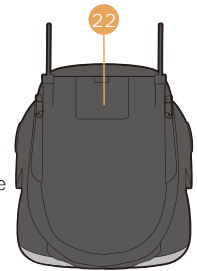
ISOFIX Guide
Insert the ISOFIX guides onto the car's anchors to attach the child seat securely.



Fabric Insert Tool
This fabric assist tool is designed to help with installing fabric covers.



- 13. ISOFIX Connect Locking Arms
- 14. ISOFIX Installation Indicator
- 15. ISOFIX Unlocking Button
- 16. ISOFIX Double-locking Button
- 17. Top Tether Storage
- 18. Top Tether Release Button
- 19. Top Tether
- 20. Recline Position Adjustment Handle
- 21. Lap Belt Guide



22. User Manual Storage

3.Basic Information

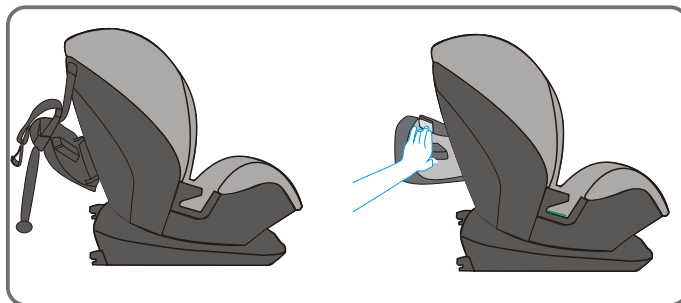


Recline Position Adjustment
There are 5 recline positions for this product. Pull the recline position adjustment handle(16), and push or pull the seat to the desired position.

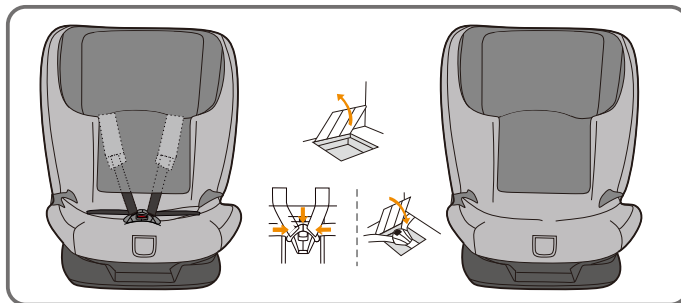


Headrest Height Adjustment
The adjustable headrest has 12 positions. Adjust the headrest (1) to the most suitable height by vertically pulling the headrest height adjustment lever(7).

3.Basic Information

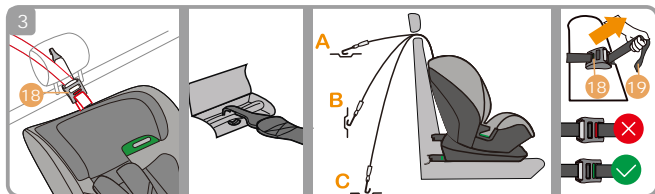
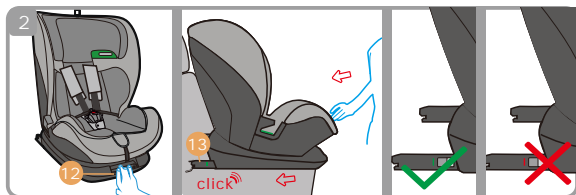
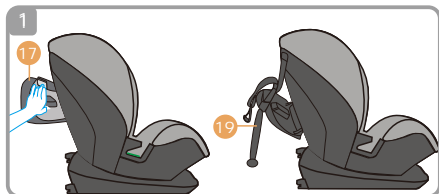


Top Tether Storage
100-150cm



Buckle Storage
100-150cm

4. Instruction for Stature 76 - 105cm



4. Instruction for Stature 76 - 105cm

- 1 Open the top tether storage (17), which is located at the back of the seat, and take out the top tether (19).
- 2 Pull the ISOFIX release handle (12) to extend the ISOFIX connect locking arms (13).

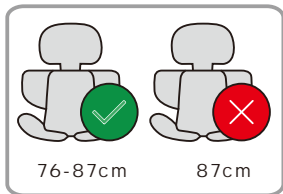
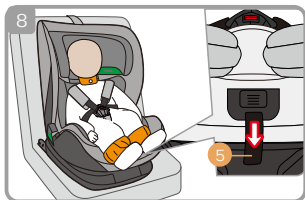
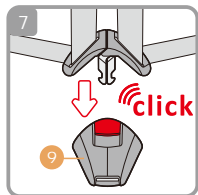
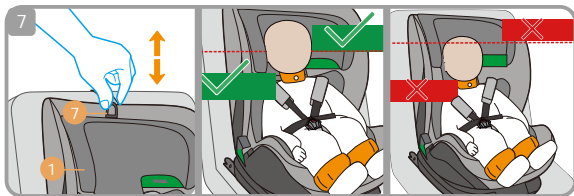
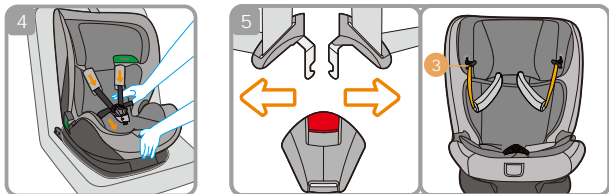
Insert the ISOFIX connect locking arms (13) into the ISOFIX fixture points in the vehicle seat. Ensure that there is a "click" sound and a green indication on both ISOFIX installation indicators (14).

TIP: The ISOFIX fixture points are two metallic clips for each seat, positioned between the backrest and the seating surface of the vehicle seat. In case if doubt, please refer to the driver's manual of your vehicle.

- 3 Press the top tether release button (18) to extend the top tether (19) until it is long enough to hook onto the user-ready tether anchorage behind.

When the top tether (19) is correctly installed, the indicator on the top tether (19) will turn green.

4. Instruction for Stature 76 - 105cm



4. Instruction for Stature 76 - 105cm

- 4 Press the harness release button (4) and pull the shoulder straps (3) forward as far as possible to loosen them.
- 5 Open the buckle (9) by pressing the red button, then secure the shoulder straps (3) to the sides of the car seat.

Notice The seat body has magnets on both sides that can hold the metal tongues on the shoulder straps.

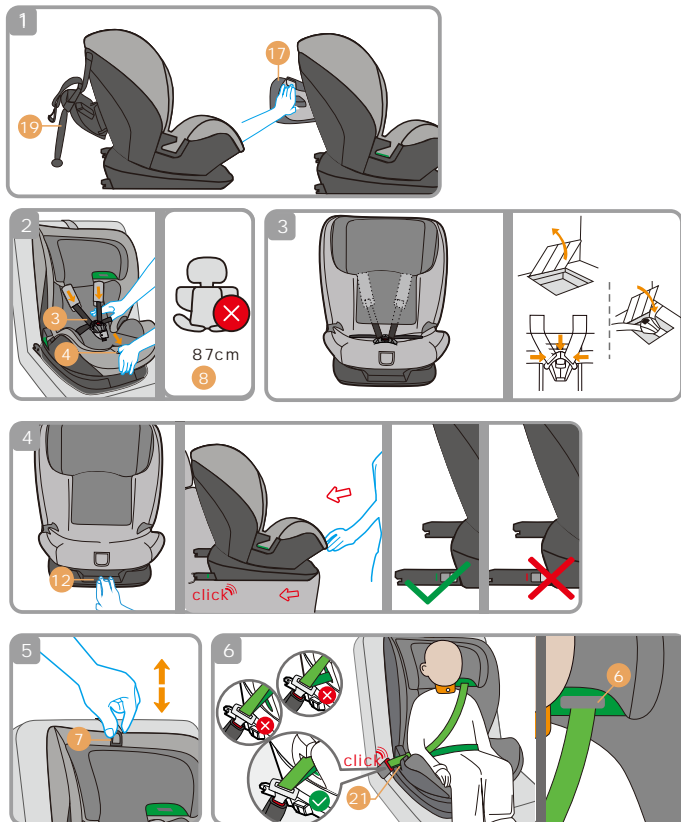
- 6 Pull headrest adjusting lever (7) to adjust the headrest (1) to the proper position ensures optimal protection for your child in the car seat. The headrest (1) must be set so that the shoulder straps (3) are at the same level as your child's shoulder or slightly above.

Notice Ensure the child's head is positioned in the center of the headrest.

- 7 Guide the two buckle latches together and engage them before inserting them into the buckle (9). Make sure you hear a "click" sound.
- 8 Put one hand in between the baby and the straps. Pull the harness adjustment strap (5) until the space between the baby and the straps is about the thickness of your palm.

CAUTION! Pull the strap end straight towards you, not upwards or downwards.

5. Instruction for Stature 100 -150cm



5. Instruction for Stature 100 -150cm

- 1 Detach the top tether (19) from the hook. Open the cover of the top tether storage (17), properly assemble the top tether (19), then place it in the storage compartment and close the cover.
- 2 Press the harness release button (4) and pull the shoulder straps (3) forward as far as possible. Remove the inner cushion (8).
- 3 Place the shoulder strap (3) under the fabric cover. Open the cover of the buckle storage, properly assemble the buckle (9), then place it in the storage compartment and close the cover.
- 4 Pull the ISOFIX release handle (12) to extend the ISOFIX connect locking arms (13).

Insert the ISOFIX connect locking arms (13) into the ISOFIX fixture points in the vehicle seat. Ensure that there is a "click" sound and a green indication.

TIP: The ISOFIX fixture points are two metallic clips for each seat, positioned between the backrest and the seating surface of the vehicle seat. In case if doubt, please refer to the driver's manual of your vehicle.

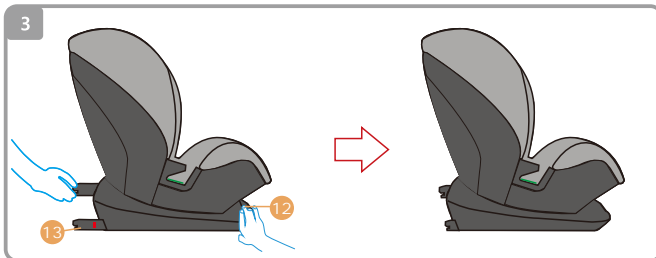
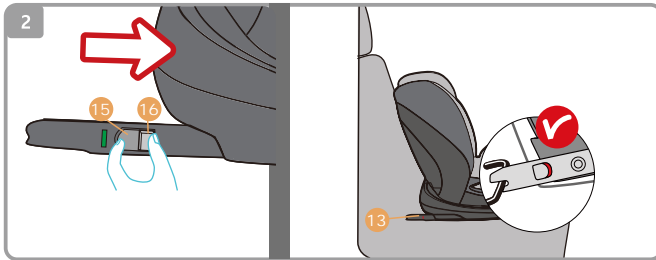
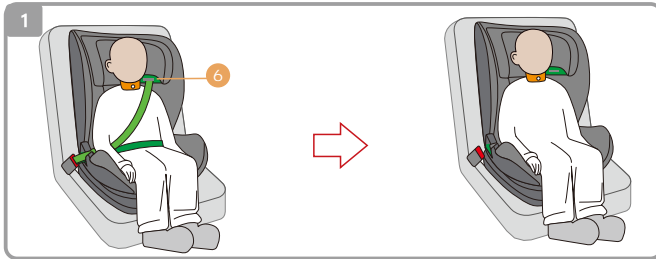
- 5 Adjust the height of the headrest (1) according to your child's height.

Notice: Ensure the child's head is centered on the headrest.

- 6 Thread the vehicle belt through the shoulder belt guide (6) and lap belt guide (21). Fasten the vehicle belt until you hear an audible "click."

Notice: For children with a height between 100-150cm, using ISOFIX is not mandatory. Parents can choose whether or not to use ISOFIX based on their individual circumstances.

6. Removing the Seat



6. Removing the Seat

- 1 Unfasten the seat belt, ensuring the belt is removed from the shoulder belt guide (6).
- 2 Press the ISOFIX unlocking button (15) and the ISOFIX double-locking button (16) simultaneously. When the ISOFIX installation indicator (14) shows red, it means the ISOFIX connect locking arms (13) are disconnected from the fixture points.
- 3 Pull the ISOFIX release handle (12) and push the ISOFIX connect locking arms (13) into the seat.

7. Important Safety Precautions



Never leave your child unattended in the child safety seat, especially when not in the vehicle.



For the protection of all vehicle occupants

In the event of an emergency stop or accident, unsecured persons or objects may cause injury to other vehicle occupants.

Always ensure the following:

The backrests of the vehicle seats are locked (e.g., the foldable rear seat bench latch is engaged).

- All heavy or sharp-edged objects in the vehicle (e.g., on the parcel shelf) are secured.
 - All passengers in the vehicle have their seat belts fastened.
- The child safety seat is always secured when in the vehicle, even if no child is being transported.

To Maintain Optimal Protection

- In the event of a collision at a speed exceeding 10 km/h, the child safety seat may incur damage that is not immediately visible.
- It is important to replace the child seat after such incidents to ensure continued safety. Proper disposal of the damaged seat is required.

8. Care and Cleaning

- Regularly inspect all components for any signs of damage. Verify the proper functioning of all mechanical parts regularly.
- To avoid damage or breakage, ensure the child seat does not become trapped in car doors, seat tracks, or other vehicle mechanisms.
- If the child seat sustains damage (e.g., from being dropped), it must be inspected by the manufacturer for safety assurance.

Care for Harness Buckle

- The functionality of the harness buckle is essential for your child's safety. Malfunctions are typically caused by the buildup of dirt and dust.

Notes for Cleaning the Car Seat

- To maintain the proper functionality of the car seat, please ensure that only original replacement seat covers are used. Replacement seat covers are essential for the correct performance of the car seat and are available from your retailer or authorized branches.



The child seat must not be used without the seat cover.

- The cover can be removed and washed with a mild detergent delicate cycle (30°C). Follow the instructions on the washing label of the cover. The cover's colors may fade if washed at temperatures higher than 30°C. Do not spin dry, and never use an electric dryer as the fabric may separate from the padding.
- Clean plastic parts with soapy water. Do not use harsh cleaning agents such as solvents.

CAUTION! Never remove the buckle tongues from the straps.

9. Warranty

We provide a 7-year warranty for this child car seat against manufacturing or material defects. The warranty period begins on the date of purchase. To validate the warranty, please keep the invoice and register your product on welldon.com.

The Warranty Does Not Cover:

- Natural signs of wear and damage resulting from excessive stress.
- Damage resulting from inappropriate or improper use.
- Color fastness may diminish when exposed to UV radiation. However, all fabrics fade when exposed to UV radiation. This is not a material defect but a normal sign of wear that is not covered by the warranty.
- Buckle malfunction is often due to the accumulation of dirt and dust, which may prevent it from working properly. If this occurs, please check if you can clean it yourself without damaging the buckle. If cleaning does not resolve the issue, please contact after sales service.

For warranty claims, please contact your retailer directly. They will provide the necessary advice and support. When processing claims, product-specific depreciation rates will be applied. Please refer to our General Terms and Conditions, which are available from your retailer.

10. Safety Checklist

- ☐ Did you read and understand the vehicle owner's manual, this user's manual, and all labels found on this Child Restraint?
- ☐ Is the harness adjusted to the correct position according to the size of the baby?
- ☐ Is the child's height between 76-150cm?
- ☐ Is the buckle strap snug against the child but not under the child?
- ☐ Is the buckle strap snug against the child, not under the child?
- ☐ Is the Child Restraint Rear-Facing in an approved vehicle seat location?
- ☐ Is the harness securely fastened without any slack?
- ☐ Is the seat angle adjusted correctly according to the child's age and size?
- ☐ Do you regularly check the installation and condition of the Child Restraint to ensure it remains in good working order?

If you answered YES to all these questions, you are good to go, and please DRIVE SAFELY!