

Innovating Safety for Every Mile

WELLDON

**Ningbo Welldon Infant And Child Safety
Technology Co.,Ltd.**
www.welldon.com

24V1.1

WELLDON

**CROWN 2
CROWN 2 BASE**

USER MANUAL



**WD033 BASE
WD033**



This infant carrier features a ISOFIX base for easier installation, ensuring maximum safety and comfort for your baby during travel.



Recommended for:
Age: From birth to approx. 18 months
Stature: 40-87cm



Only suitable for vehicle seats with automatic three-point belts approved by UN Regulation No. 16 or a comparable standard.

CROWN 2 / CROWN 2 ISOFIX BASE

WD033/WD033 BASE		
Tested and Certified According to ECE R129		
Model No.	Stature	Weight
WD033	Height from 40cm to 87cm	Up to 13 Kg
WD033 BASE		

*ECE = European Standard for Safety Equipment
The child safety seat has been designed, tested, and certified according to the requirements of the European Standard for Child Safety Equipment (ECE R129). The seal of approval "E" (in a circle) and the approval number are located on the approval label (sticker on the child safety seat).
This approval will be invalidated if any modifications are made to the child safety seat. Only the manufacturer is permitted to make modifications to the child safety seat.



- EN Scan for user manual
- DE Scan für Benutzerhandbuch
- FR Scannez pour le manuel d'utilisation
- IT Scansiona per il manuale utente
- ES Escanear para el manual del usuario
- RU сканируйте для руководства пользователя
- TH สแกนคู่มือผู้ใช้

يحاشرليل ايلخلح لسم AR

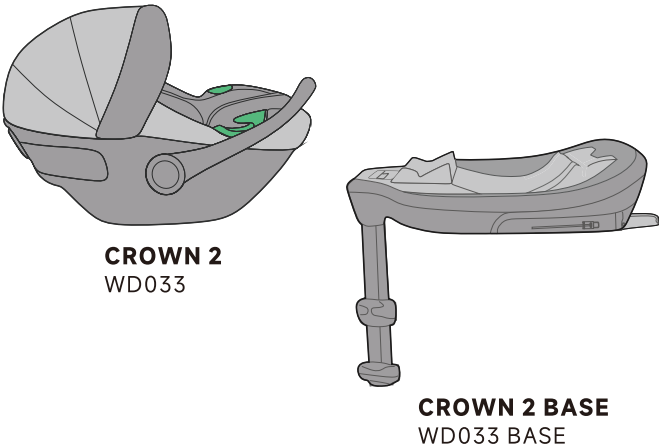
סרוק להורדת הוראות שימוש HE

more

-
-
-

This child safety seat complies with UN Regulation No. 129/03. Please read the full instructions carefully before installation and using this product.

Basic Information



Notice

This is an i-Size Enhanced Child Restraint System (ECRS), approved in accordance with UN Regulation No 129. It is designed for use in i-Size compatible vehicle seating positions, as indicated by vehicle manufacturers in the vehicle user manual. If you are unsure about compatibility, please consult either the manufacturer of the Enhanced Child Restraint System or your retailer.

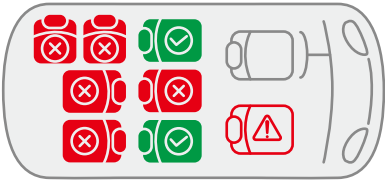
Important Safety Notice:

Do not use this Enhanced Child Restraint System in seating positions where an active frontal airbag is installed.

CAUTION! Please use the baby insert attached to this infant carrier when your baby's height is less than 75 cm.

Basic Information

Use In The Vehicle



Proper seating positions for your child car seat.



If you need to install the seat in the front passenger seat, please ensure that the airbag is deactivated to avoid serious injury.

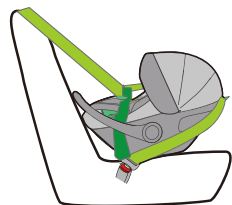


WARNING!

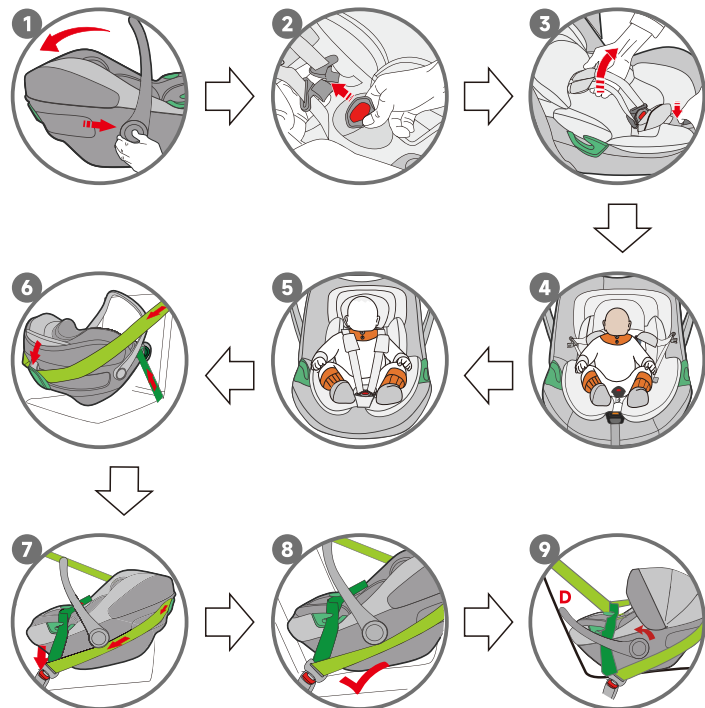
Never use this child restraint system in seating positions where an active airbag is installed.



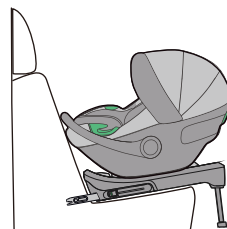
Quick Installation Guide



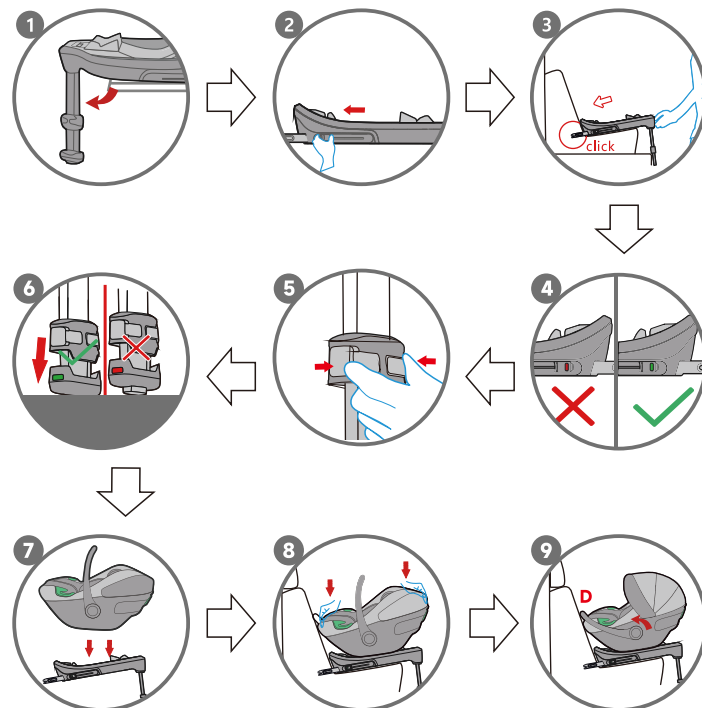
Installation with 3-Point Seat Belt



Quick Installation Guide



Installation with ISOFIX Base



1.Warning..... 6

2.Product Description.....7-10

3.Restraining the Baby.....11-12

4.Installation with ISOFIX Base.....13-14

5.Installation with 3-Point Seat Belt..... 15

6.Uninstallation.....16

7.Important Safety Precautions.....17

8.Care and Cleaning.....18

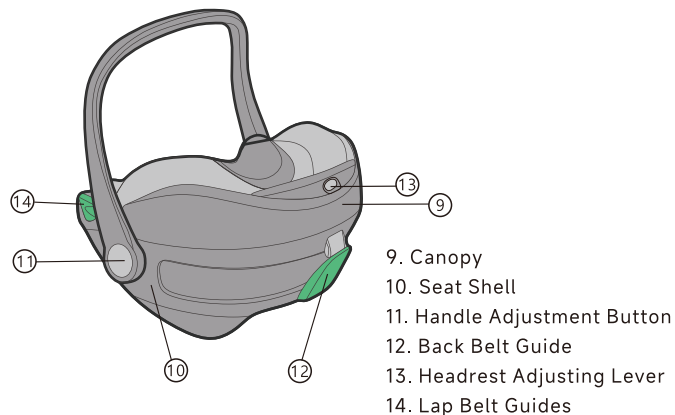
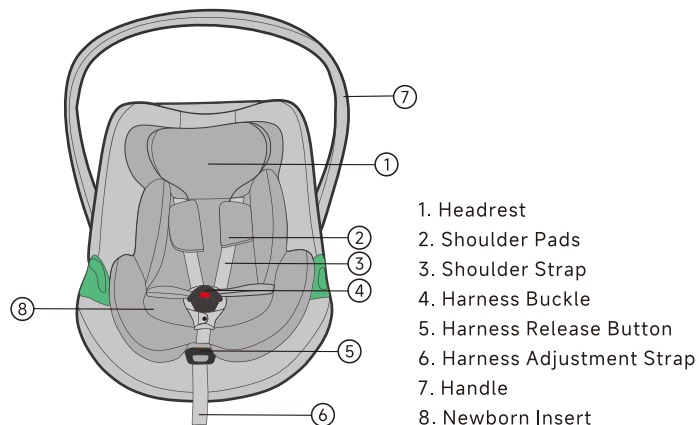
9.Warranty.....19

10.Safety Checklist.....20

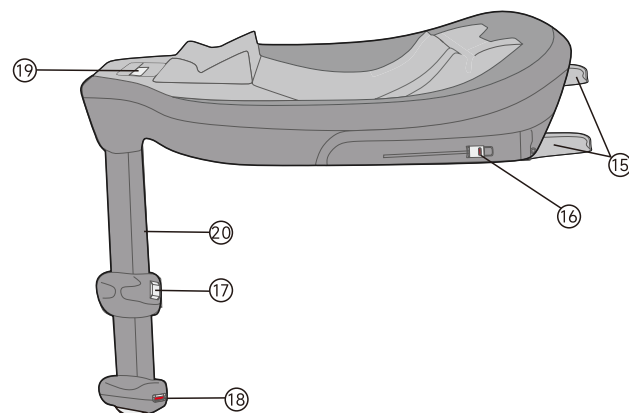
**READ USER MANUAL PRIOR TO
INSTALLING AND USING
THIS INFANT CARRIER.
KEEP INSTRUCTIONS FOR FUTURE USE.**

1. The rigid items and plastic parts of the infant carrier should be located and installed so that they are not likely to become trapped by a movable seat or in the vehicle's door during everyday use.
2. Any straps securing the restraint to the vehicle should be tight. The support leg must be in contact with the vehicle floor.
3. Straps or impact shields restraining the child should be adjusted to fit the child's body, and straps should not be twisted.
4. It is important to ensure that the position of the lap straps is lower than baby's hips.
5. The infant carrier should be replaced if it has been subjected to violent stresses in an accident.
6. DO NOT leave your child unattended in the infant carrier.
7. Secure any luggage or other objects that could cause injuries in the event of a collision.
8. DO NOT use the infant carrier without the fabric cover.
9. DO NOT replace the cover of the infant carrier with anything other than the one recommended by the manufacturer, as the cover is an integral part of the restraint system's safety performance.
10. Refer to the vehicle manufacturer's handbook for the use of an "i-Size ECRS".

2.Product Description



2.Product Description



ISOFIX Guide

Insert the ISOFIX Guides onto the car's anchors to attach the child seat securely.



Fabric Insert Tool

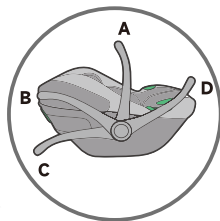
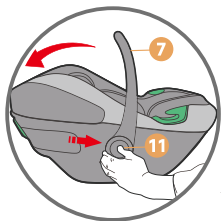
This fabric assist tool is designed to help with installing fabric covers.

- 15. ISOFIX Connect Locking Arms
- 16. ISOFIX Release Button
- 17. Support Leg Adjusting Button
- 18. Support Leg Installation Indicator
- 19. Infant Carrier Release Button
- 20. Support Leg

2.Product Description

Handle Adjustment

Press and hold the handle adjustment button (11). While keeping the button pressed, adjust the handle (7) backward until it clicks into the desired position.



Position A – this position is only for carrying the infant carrier and should not be used when installing it on the vehicle seat.

CAUTION! Ensure the handle is securely engaged before picking up the infant carrier.

Position B – for placing your baby into the infant carrier.

Position C – for safely setting the infant carrier down on the ground of flat surface outside of the car.

Position D – for providing extra safety support when the infant carrier is installed on the vehicle seat.

2.Product Description

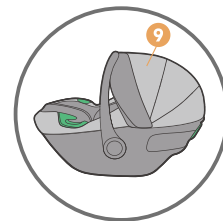
Foldable Canopy

Pull the plastic bar to expand/fold the canopy (9).



A

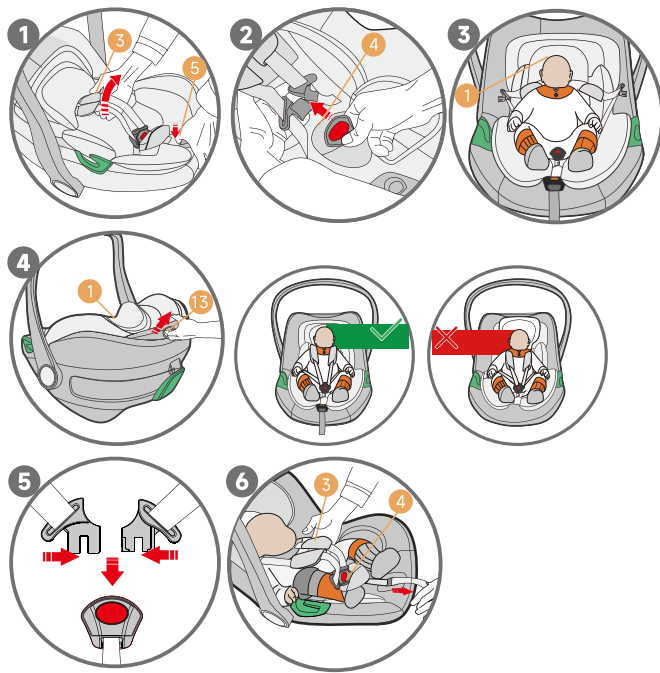
Fold Status



B

Expand Status

3. Restraining the Baby



IMPORTANT NOTE

Always ensure the strap end is properly managed. When traveling, particularly outside the car, make sure it is attached to the cover to prevent it from getting caught or causing any safety issues.

ENSURING PROPER BUCKLING OF YOUR CHILD IN THE SAFETY SEAT

- The shoulder straps of the infant carrier are comfortably but firmly fitted around your child.
- The shoulder straps are properly adjusted to the correct height.
- The shoulder straps are not twisted.
- The buckle tongues are securely engaged in the harness buckle.

3. Restraining the Baby

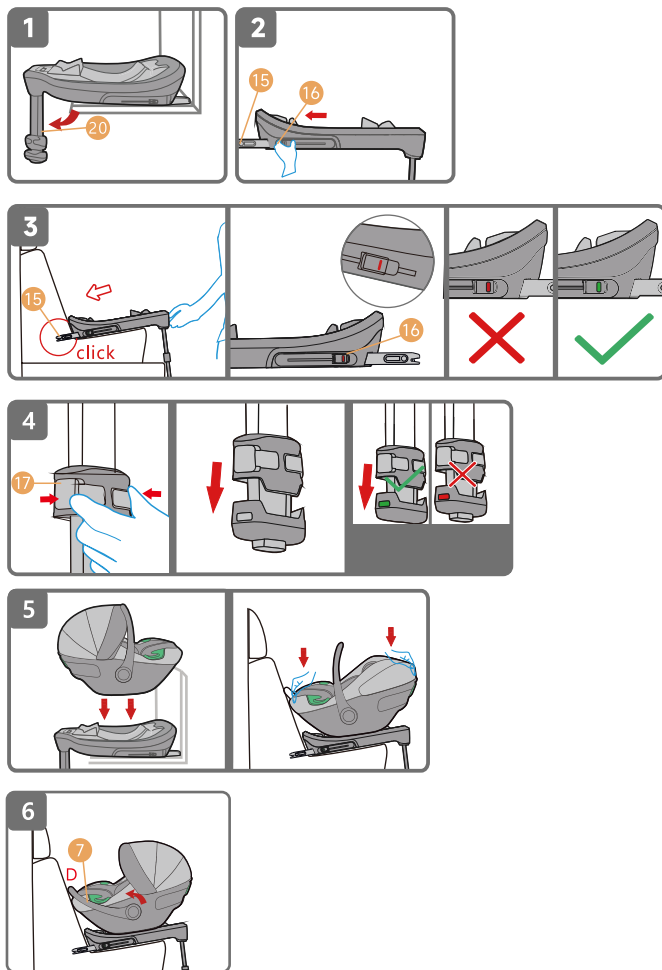
- 1 Press the harness release button (5) and simultaneously pull both shoulder straps (3) forward.
- 2 Open the harness buckle (4) by pressing the red buckle release button.
- 3 Place your baby into the infant carrier, ensure your baby's head is correctly positioned at the center of the small headrest (1).
- 4 Adjust the headrest (1) height to fit your baby, tilt the headrest adjusting lever (13) until it disengages. Slide the headrest adjusting lever (13) until the shoulder straps (3) are at the correct height, then re-engage the adjuster to secure it.
The headrest (1) must be adjusted so that the shoulder straps (3) are level with or slightly above your baby's shoulders.
- 5 Put the buckle tongues together and insert them into the harness buckle (4) until you hear an audible "click".

CAUTION! Do not twist or interchange the shoulder straps.

- 6 Put one hand in between the baby and the shoulder straps (3), pull the harness adjustment strap (6) end until the space between the baby and the straps is about the thickness of your palm.

CAUTION! Pull the strap end straight towards you, not upwards or downwards.

4. Installation with ISOFIX Base



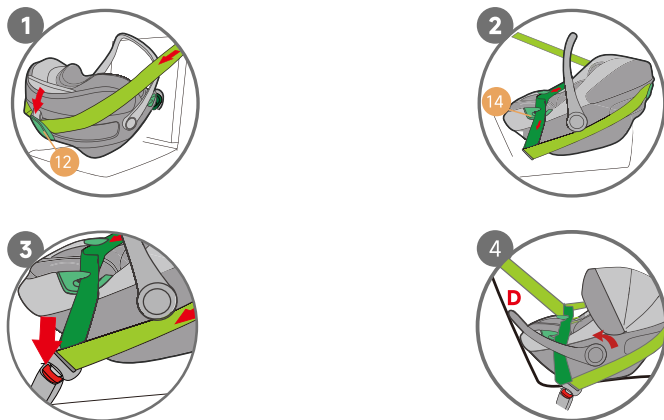
4. Installation with ISOFIX Base

IDENTIFY ISOFIX FIXTURE POINTS

The ISOFIX fixture points are two metallic clips for each seat, positioned between the backrest and the seating surface of the vehicle seat. In case of doubt, please refer to the driver's manual of your vehicle.

- 1 Pull out the support leg (20).
 - 2 Press the ISO release button (16) and slide the ISO connect locking arms (15).
 - 3 When the ISO connect locking arms (15) are successfully inserted into the fixture point, the indicators on the release buttons (16) will turn green.
 - 4 Press the support leg adjusting button (17) and pull out the support leg (20) until it rests firmly on the floor. The support leg installation indicator will turn green.
 - 5 Position the infant carrier onto the base and listen for a "click" sound indicating that the carrier is securely attached.
- *TIP- Shake the infant carrier after installation to make sure it is well-connected.**
- 6 Adjust the handle (7) to position D, and make sure the handle (7) is up against the vehicle seat.

5. Installation with 3-Point Seat Belt

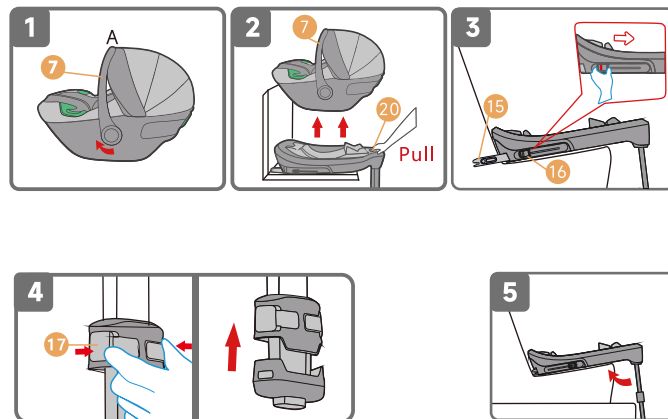


INSTALLATION OF INFANT CARRIER WITHOUT ISOFIX BASE

- 1** Thread the vehicle's 3-point seat belt through the back belt guide **(12)**.
- 2** Thread the vehicle's 3-point seat belt through the lap belt guide **(14)**.
- 3** Insert the seat belt buckle into the corresponding latch until you hear a distinct "click" sound, ensuring the seat belt is securely fastened.
- 4** Adjust the handle **(7)** to position D, and make sure that the handle is up against the vehicle seat.

CAUTION! DO NOT twist the seat belt.

6. Uninstallation



REMOVAL INSTRUCTION (WITH ISOFIX BASE)

- 1** Adjust the handle **(7)** to the upright position A.
- 2** Pull the car seat release button **(20)** to remove the infant carrier from the base by lifting the handle **(7)**.
- 3** Press the ISOFIX release button **(16)** to slide the ISOFIX connecting arms **(15)** and detach the ISOFIX base from the vehicle seat.
- 4** Press the support leg adjusting button **(17)** to retract the support leg **(20)**.
- 5** Rotate back the support leg **(20)** and insert it into the designated slot at the bottom of the seat.

7. Important Safety Precautions



Never leave your child unattended in the child safety seat, especially when not in the vehicle.



For the protection of all vehicle occupants

In the event of an emergency stop or accident, unsecured persons or objects may cause injury to other vehicle occupants.

Always ensure the following:

The backrests of the vehicle seats are locked (e.g., the foldable rear seat bench latch is engaged).

- All heavy or sharp-edged objects in the vehicle (e.g., on the parcel shelf) are secured.
- All passengers in the vehicle have their seat belts fastened. The child safety seat is always secured when in the vehicle, even if no child is being transported.

To Maintain Optimal Protection

- In the event of a collision at a speed exceeding 10 km/h, the child safety seat may incur damage that is not immediately visible.
- It is important to replace the child seat after such incidents to ensure continued safety. Proper disposal of the damaged seat is required.

8. Care and Cleaning

- Regularly inspect all components for any signs of damage. Verify the proper functioning of all mechanical parts regularly.
- To avoid damage or breakage, ensure the child seat does not become trapped in car doors, seat tracks, or other vehicle mechanisms.
- If the child seat sustains damage (e.g., from being dropped), it must be inspected by the manufacturer for safety assurance.

Care for Harness Buckle

- The functionality of the harness buckle is essential for your child's safety. Malfunctions are typically caused by the buildup of dirt and dust.

Notes for Cleaning the Car Seat

- To maintain the proper functionality of the car seat, please ensure that only original replacement seat covers are used. Replacement seat covers are essential for the correct performance of the car seat and are available from your retailer or authorized branches.



The child seat must not be used without the seat cover.

- The cover can be removed and washed with a mild detergent delicate cycle (30°C). Follow the instructions on the washing label of the cover.
- The cover's colors may fade if washed at temperatures higher than 30°C. Do not spin dry, and never use an electric dryer as the fabric may separate from the padding. Clean plastic parts with soapy water. Do not use harsh cleaning agents such as solvents.

CAUTION! Never remove the buckle tongues from the straps.

9. Warranty

We provide a 7-year warranty for this infant carrier against manufacturing or material defects. The warranty period begins on the date of purchase. To validate the warranty, please keep the invoice and register your product on welldon.com.

The Warranty Does Not Cover:

- Natural signs of wear and damage resulting from excessive stress.
- Damage resulting from inappropriate or improper use.
- Color fastness may diminish when exposed to UV radiation. However, all fabrics fade when exposed to UV radiation. This is not a material defect but a normal sign of wear that is not covered by the warranty.
- Buckle malfunction is often due to the accumulation of dirt and dust, which may prevent it from working properly. If this occurs, please check if you can clean it yourself without damaging the buckle. If cleaning does not resolve the issue, please contact after sales service.

For warranty claims, please contact your retailer directly.

They will provide the necessary advice and support.

When processing claims, product-specific depreciation rates will be applied. Please refer to our General Terms and Conditions, which are available from your retailer.

10. Safety Checklist

- ☒ Did you read and understand the vehicle owner's manual, this user's manual, and all labels found on this Child Restraint?
- ☒ Is the Child Restraint Rear-Facing in an approved vehicle seat location?
- ☒ If using the infant carrier, is the ISOFIX base secured to the vehicle seat? Are the indicators of ISOFIX and support leg all in green?
- ☒ Is the infant carrier securely attached to the ISOFIX base?
- ☒ If using the infant carrier only, is the infant carrier secured to the vehicle seat?
- ☒ Is the harness adjusted to the correct position according to the size of the baby?
- ☒ Is the buckle strap snug against the child but not under the child?
- ☒ Is the handle locked in the position D while using this infant carrier in a vehicle?
- ☒ Is the handle locked in the position A when lifting by the handle?
- ☒ Is your child between 40 and 87 cm (16 and 34 inch) in height?
- ☒ Is the top of your child's head more than 2.5 cm (1 inch) from the top of the infant carrier or headrest, whichever is higher?

If you answered YES to all these questions, you are good to go, and please DRIVE SAFELY!