

Innovating Safety for Every Mile

WELLDON
www.welldon.com



WELLDON

SMARTURN LUX USER MANUAL



WD040



Recommended for:

Age: From birth to approx. 7 years

Stature: 40-125cm

Only suitable for vehicle seats with automatic three-point belts approved by UN Regulation No. 16 or a comparable standard.

Tested and Certified According to ECE R129				
Model No.	Stature	Orientation	Installation	Approval Type
SMARTURN LUX WD040	40-105cm	Rearward	ISOFIX +Support Leg +Harness	i-Size
	76-105cm	Forward		
	100-125cm	Forward	Vehicle 3 point belt+ ISOFIX	
			Vehicle 3 point belt	

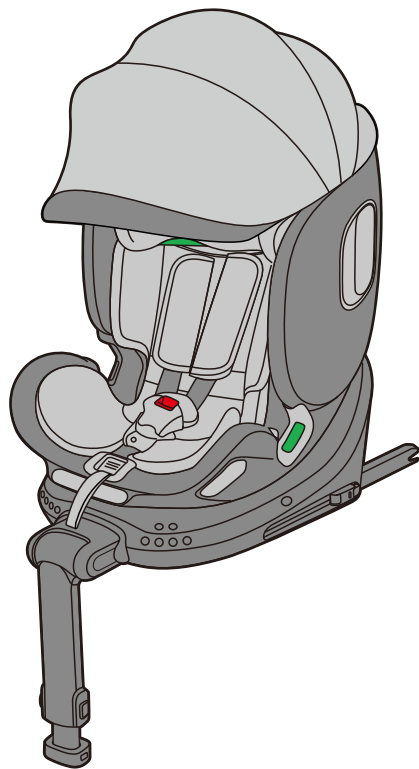
*ECE = European Standard for Safety Equipment
The child safety seat has been designed, tested, and certified according to the requirements of the European Standard for Child Safety Equipment (ECE R129). The seal of approval "E" (in a circle) and the approval number are located on the approval label (sticker on the child safety seat).

This approval will be invalidated if any modifications are made to the child safety seat. Only the manufacturer is permitted to make modifications to the child safety seat.



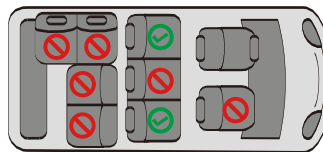
EN Scan for user manual

This child safety seat complies with UN Regulation No. 129/03. Please read the full instructions carefully before installation and using this product.



SMARTURN LUX
WD040

USE IN THE VEHICLE



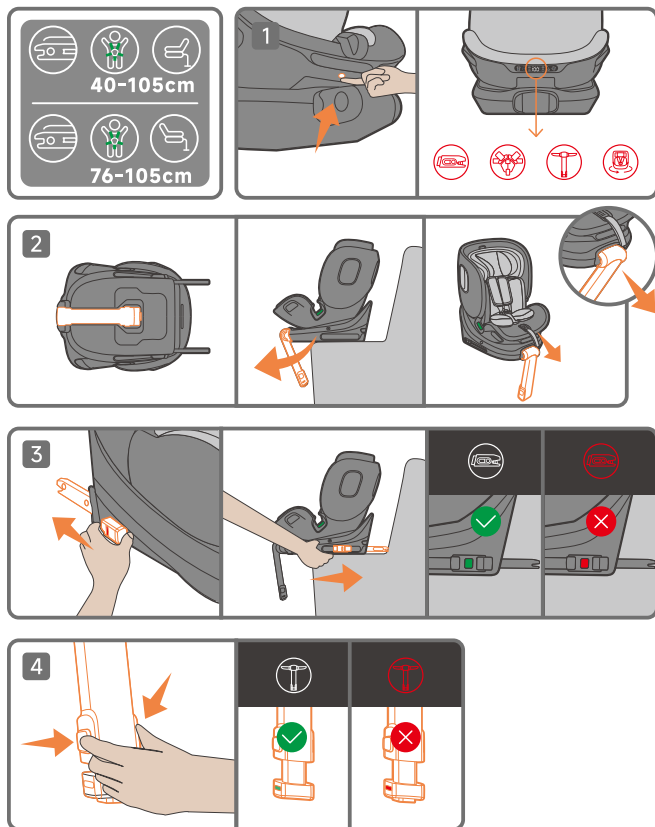
Proper seating positions
for your child car seat.

⚠ WARNING!

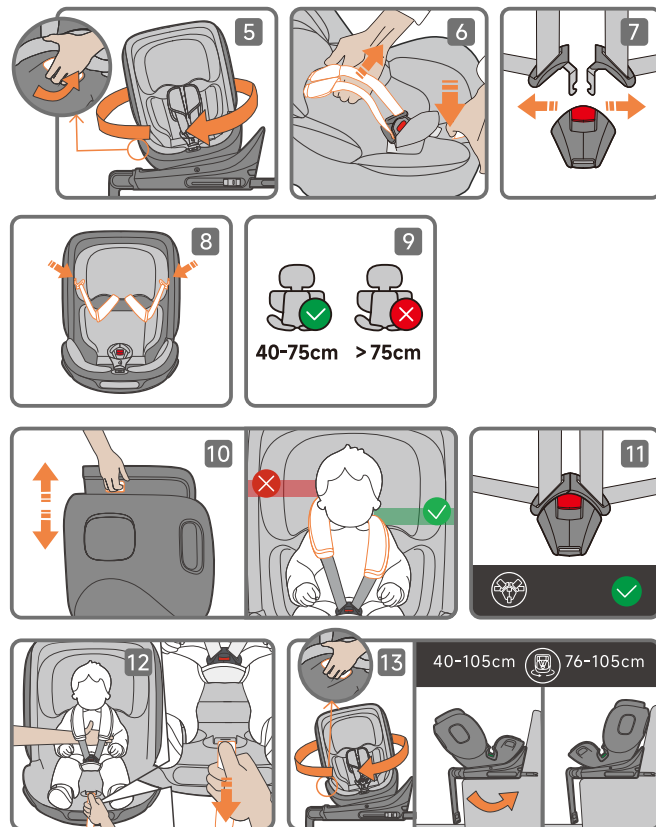
Never use this child restraint system in seating positions where an active airbag is installed.



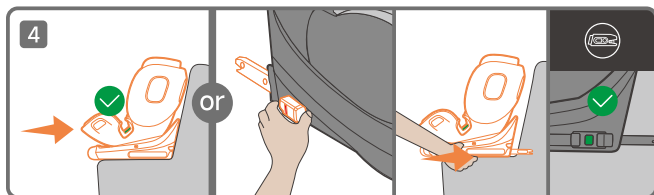
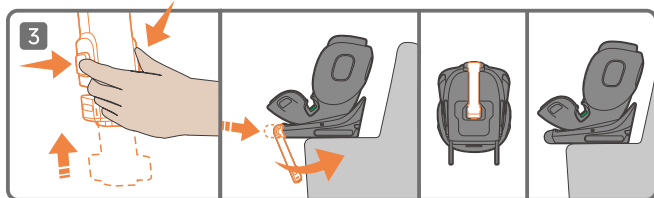
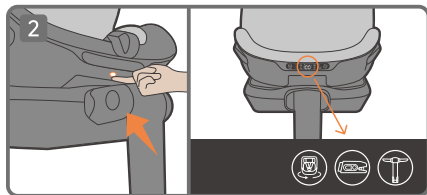
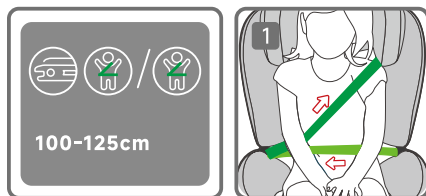
Quick Installation Guide



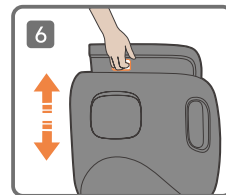
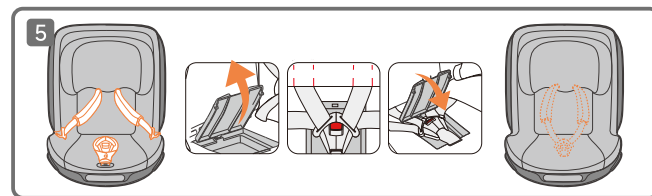
Quick Installation Guide



Quick Installation Guide



Quick Installation Guide



1.Warning.....10

2.Product Description.....11-20

3.Voice Control Commands..... 21

4. APP..... 22-24

5.Autoturn Welcome Mode..... 25-26

6. Instruction for Stature 40-105cm..... 27-30

7. Instruction for Stature 76-105cm..... 31-32

8.Instruction for Stature 100-125cm..... 33-34

9.Uninstallation..... 35

10.Important Safety Precautions.....36

11.Care and Cleaning..... 37

12.Warranty.....38

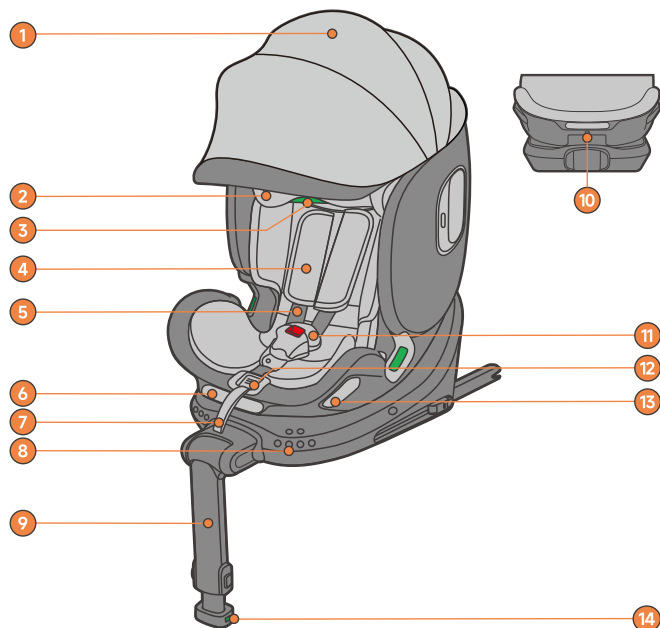
13.Safety Checklist.....39

14.Headrest Height Reference.....41-42

**READ USER MANUAL PRIOR TO
INSTALLING AND USING
THIS CAR SEAT!
KEEP USER MANUAL FOR FUTURE USE.**

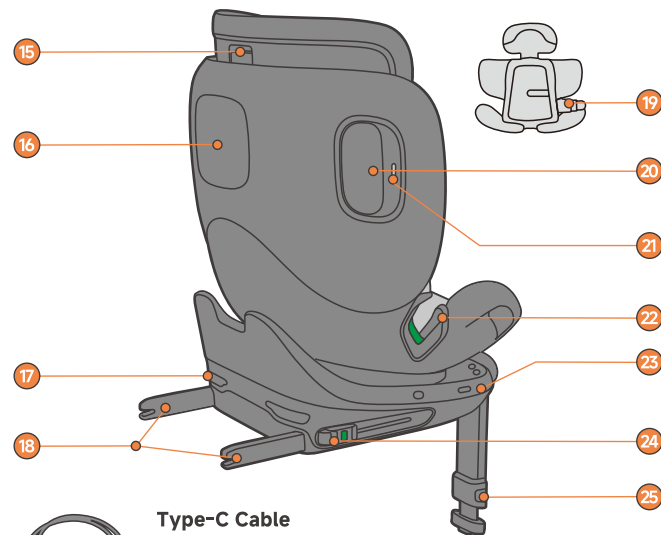
- The rigid items and plastic parts of the baby car seat should be located and installed so that they are not likely to become trapped by a movable seat or in the vehicle's door during everyday use.
- Any straps securing the restraint to the vehicle should be tight. Straps or impact shields restraining the child should be adjusted to fit the child's body, and straps should not be twisted.
- It is important to ensure that the lap straps are positioned lower than the baby's hips.
- The baby car seat should be replaced if it has been subjected to violent stresses in an accident.
- DO NOT leave your child unattended in the baby car seat.
- Secure any luggage or other objects that could cause injuries in the event of a collision.
- DO NOT use the car seat without the fabric cover.
- DO NOT replace the cover of the baby car seat with anything other than the one recommended by the manufacturer, as the cover is an integral part of the restraint system's safety performance.
- Refer to the vehicle manufacturer's handbook for the use of an "i-Size ECRS".
- The child restraint may not fit in all approved vehicles when used in one of all angles of inclination positions.
- It is danger to make any alterations or additions to the device without the approval of the Type Approval Authority, and it is also danger of not following closely the installation instructions provided by the child restraint manufacturer.

2.Product Description



- | | |
|-----------------------------|-----------------------------|
| 1. Canopy | 8. Touch Buttons |
| 2. Headrest | 9. Support Leg |
| 3. Shoulder Belt Guide | 10. Power Switch |
| 4. Shoulder Pads | 11. Buckle |
| 5. Shoulder Straps | 12. Harness Release button |
| 6. Display Screen | 13. Rotation Release Handle |
| 7. Harness Adjustment Strap | 14. Support Leg Indicator |

2.Product Description



Type-C Cable

Please do not use any charge cables other than those provided by Welldon.



ISOFIX Guide

Insert the ISOFIX Guides onto the car's anchors to attach the baby car seat.



Fabric Insert Tool

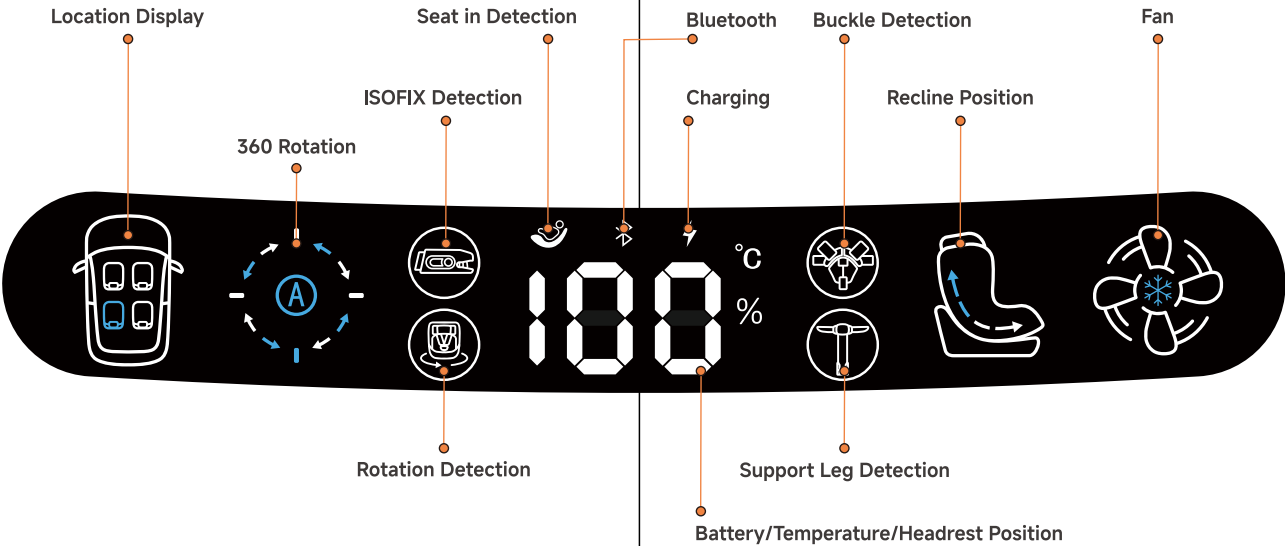
This fabric assist tool is designed to help with installing fabric covers.



Cigarette Lighter Charging Adapter

15. Headrest Adjusting Lever
16. User Manual Storage
17. ISOFIX LED
18. ISOFIX Connect Locking Arms
19. Newborn Insert
20. Side Impact Protection
21. Side Release Button
22. Lap Belt Guide
23. Type-C Power Plug
24. ISOFIX Release Button
25. Support Leg Adjusting Button

INTRODUCTION TO DISPLAY SCREEN



Display Screen Sleep Mode:

If there is no operation for **30** seconds, the display screen will enter into sleep mode. Performing any operation on the baby car seat will wake up the display screen.

2.Product Description

1.Position Display:

Ensure the safety seat is correctly installed in the rear car seat. Connect the safety seat to the Weldon App. Perform seat alignment in the app and select the properly position. A blue light on the app interface will indicate the correct position.



2.Rotation

When turning left or right, the corresponding arrow turns white.
White Icon: Automatic rotation mode on.



Red Icon: Automatic rotation is restricted; manual rotation has not been reset.
Welcome Mode: Automatically rotates 90° towards to the door when the door opens.

3.Recline Position

Recline position can be controlled by voice command, touch buttons and App.



4.Fan

Indicates if the fan is ON or OFF.
The fan can be controlled by voice command, touch buttons and App.
A snowflake icon indicates that the low-temperature protection function is active (this function can be turned on/off via the App).



2.Product Description

5.WELLDOW HAWKEYE® Installation Guide System

Indicator	Icon	Status			
ISOFIX Detection			✓		✗
Buckle Detection			✓		✗
Support Leg Detection			✓		✗
Rotation Detection			✓		✗
Seat in Detection		Child Seat in		Child Not in seat	

6. Digital Display

- Battery Display
- Temperature Display
- Headrest Position

100% 23°C 3

The headrest has 13 adjustable positions. Adjust the headrest to the position closest to the child's shoulder. If the child's shoulder is between two positions, use the higher position.
Please refer to the table on pages 39-40 of the manual to select the appropriate headrest position for your child.

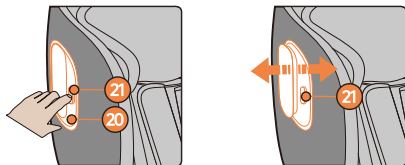
7. Battery

Normal (≥20%)	
Less than 20%	
Charging	blinking



When battery temperature exceeds 55°C, charging will stop.
When battery temperature exceeds 75°C, the battery will stop working.

SIDE PROTECTION



Open: Press the side release button (21) to extend the side impact protection (20).

Retract: Press the side release button (21) and push the side impact protection (20) together to retract them .

NOTE: only need to open the one on the door side.

MUSIC

You can customized your play list by using a Type-C USB cable to transfer the music (• mp3 format) to Smarturn.

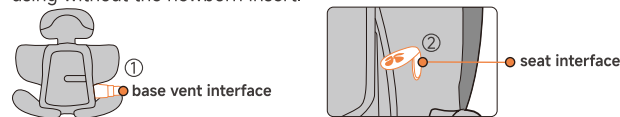


NOTE: Please do not delete or modify the folder named "Don't delete voice pack", as doing so will result in the loss of all voice functionality.
If you accidentally delete this folder, please contact customer service.

FAN

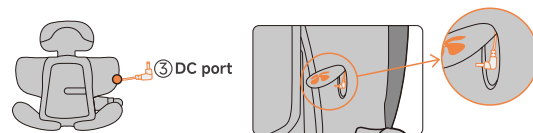
Connection and Installation:

Connect the ventilation port ① to the seat ② and press firmly. When you hear a 'click' sound, the installation is complete. Disconnect the port when using without the newborn insert.



Temperature Detection:

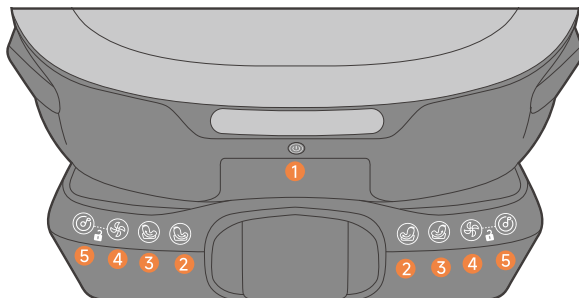
Connect the DC port ③ on the cushion and seat to display the cushion temperature on the app and screen. Disconnect the port to when using without newborn insert.



ISOFIX LED

Fully the ISOFIXs to turn on the LED; retract to turn it off. LED color can be adjusted via the App.

INTRODUCTION OF BUTTONS



1 Power Switch

Short Press: Power On Long Press: Power Off



2 Recline Down

Long Press: Recline the seat to the lowest position



3 Adjust Up

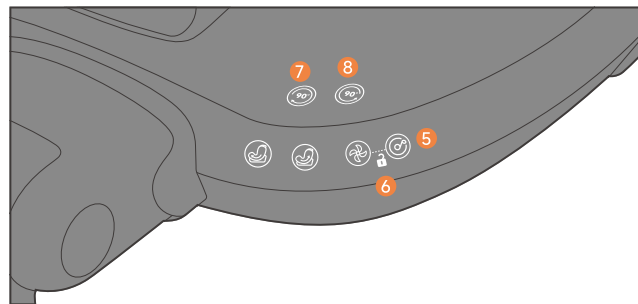
Long Press: Adjust the seat to the upright position



Note: The recline is infinitely adjustable within the range. Press and hold to adjust, release to stop.

4 Fan

Long Press: Turn on/off the fan
Short Press: Switch the fan to speed 1/2/3



5 Music

Short Press: Play/Pause music



6 Children Lock

The buttons will be locked after 30 seconds of inactivity.

Note: to unlock the buttons, press the music and fan buttons for about 2 seconds until you hear a beep.



7 Rotate Left

Short Press: Rotate 90 degree to the left



8 Rotate Right

Short Press: Rotate 90 degree to the right



3. Voice Control Commands

INTRODUCTION TO VOICE CONTROL

Please follow the voice control instructions strictly to operate the baby car seat.

FUNCTION	Voice Control Instructions	Voice Broadcast
ACTIVATE	Hi Smarturn	Hello, I am here
FAN	Turn on fan	Fan on
	Turn fan to speed one	Fan speed one
	Turn fan to low speed	Fan speed low
	Turn fan to speed two	Fan speed two
	Turn fan to medium speed	Fan speed medium
	Turn fan to speed three	Fan speed three
	Turn fan to max	Fan speed max
	Turn off fan	Fan off
VOLUME	Turn up volume	Volume up
	Volume up	
	Volume down	Volume down
	Turn down volume	
MUSIC	Turn on music	Music on
	Play music	
	Turn off music	Music off
	Next song	
	Last song	OK
ROTATION	Turn seat left	Seat turning left
	Turn seat right	Seat turning right
RECLINE	Recline seat down max	OK
	Straighten up seat	
	Adjust seat up	
	Raise seat up	
	Adjust seat down	
	Adjust seat down a little	
	Lie down seat	
	Recline seat	
	Recline seat down	
DEACTIVATE	Good bye	See you soon

NOTE: When the child is seated and the door is closed, voice control cannot rotate the seat. Other voice functions work normally.

4. App

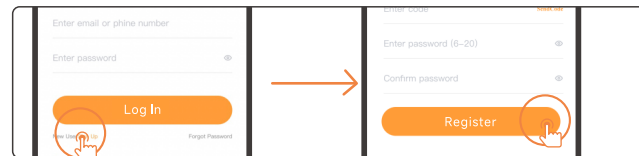
APP

Download and install the Welldon App in App store.



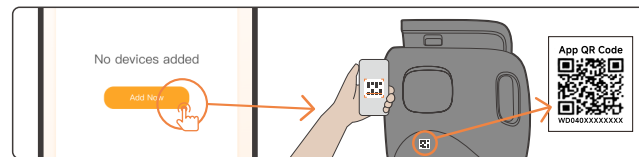
1. Register

Open the App, click "New User Registration" and fill in the basic information. Then click "Register" button to complete the registration.

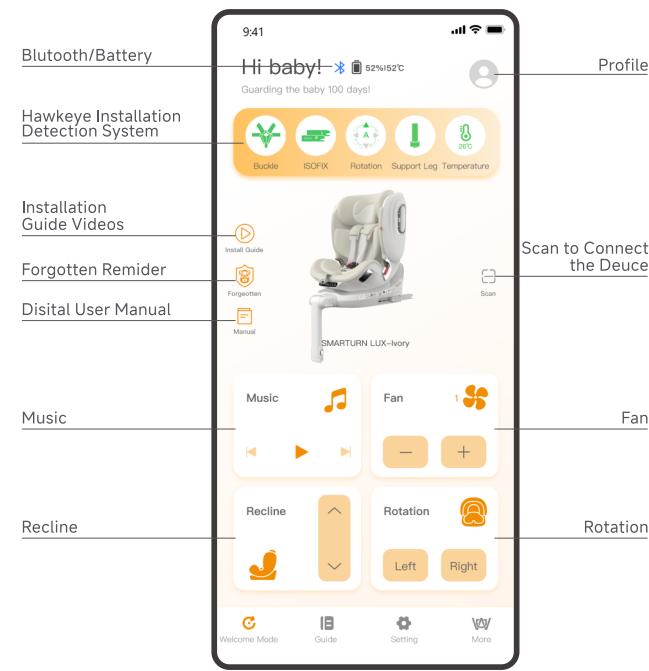


2. Connect to the Seat

After the registration (ensure your device Bluetooth and the seat are turned on), click "Add Device" on the App. Scan the QR code located on the back of the seat to connect the seat with your device.

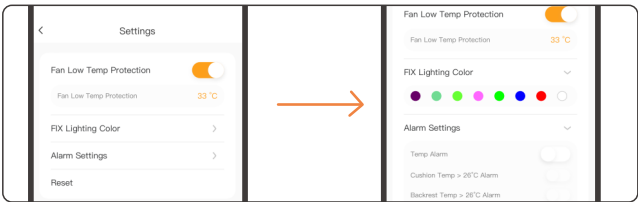


3. APP Home Page Overview



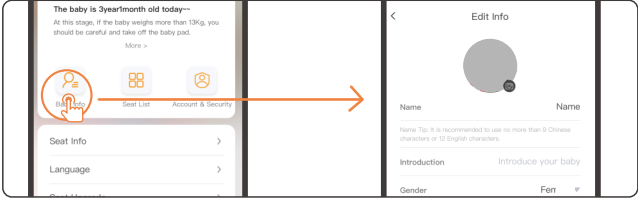
4. Seat Setting

In the seat settings, you can turn the fan's low-temperature protection on or off, set the ISOFIX LED color, and reset the settings.



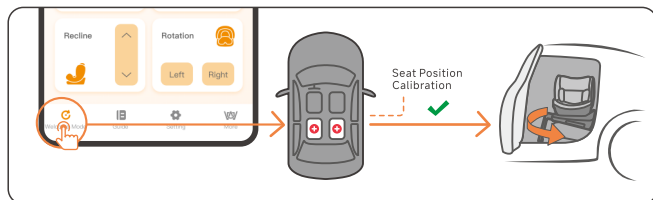
5. More

You can edit your baby's information on the app's profile page, which helps us assist you better in using the car seat.



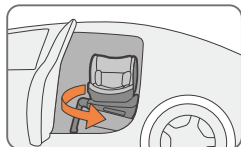
6. AUTOTURN Welcome Mode

This function allows the seat to rotate automatically towards the door when the car door opens for easier use. You need to set it up in the Welldon App.



Steps:

1. Turn on the seat. Make sure the seat is charging and your device's Bluetooth is on.
2. Open the Welldon App and click "Welcome Mode" in the bottom menu to start the setup process.
3. Follow the instructions on the App to setup the Welcome Mode.
4. Once calibration is successful, Welcome Mode will be activated.



Please enable/disable the below settings based on your baby's seating situation and the car seat space.



ON OFF

Rotating with baby on the seat



ON OFF

Rotating back when the door is closed

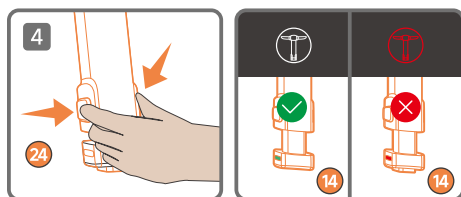
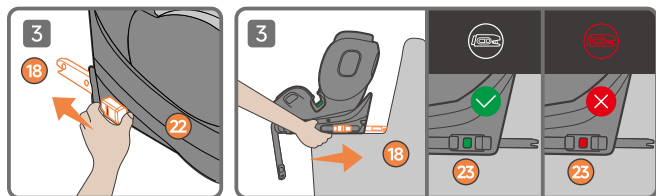
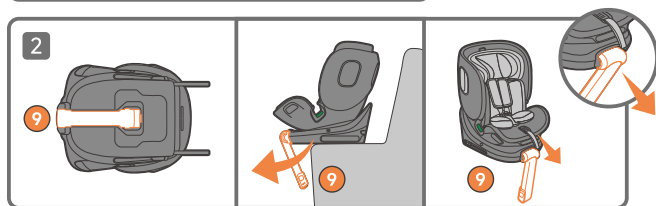
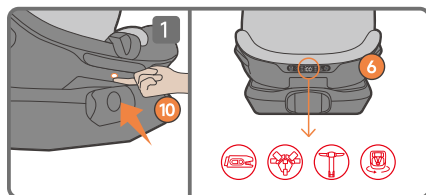
NOTE: When the Welcome Mode is on, carefully read the precautions and inspections in the App. Check all the requirements before activating this function.

NOTE: Make sure there is nothing blocking the rotation of the seat in the surrounding environment.



NOTE: When testing the Welcome Mode, do not rapidly open and close the car door. The system will only unlock and allow the next welcome rotation function after the door has been fully closed for more than 5 seconds.

6. Instruction for Stature 40-105cm



6. Instruction for Stature 40-105cm

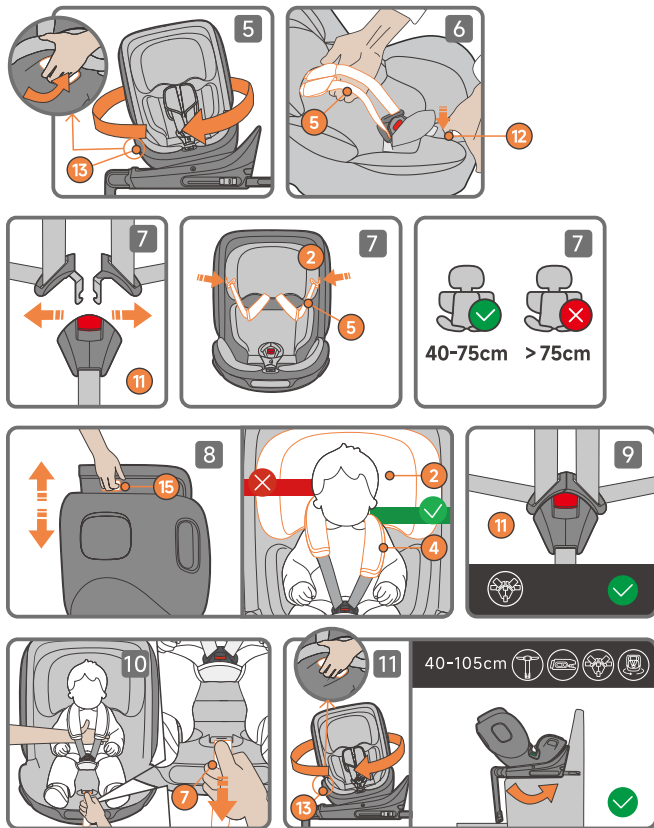
- 1 Press the power switch **(10)** to turn on the display screen **(6)** and electronic system.
- 2 Pull out the support leg **(9)** from the bottom of the seat, then pull the support leg **(9)** outward completely.

NOTE: The seat can only be rotated when the support leg is fully extended.

- 3 Press the ISOFIX release buttons **(23)** and slide the ISOFIX connect locking arms **(18)**. When the ISOFIX connect locking arms **(18)** are successfully inserted into the fixture points, check the ISOFIX release buttons **(23)** to confirm the installation status.
- 4 Extend the support leg **(9)** by pressing the support leg adjusting button **(24)** and pulling out the support leg **(9)** until it rests firmly on the floor. Check the support leg indicator **(14)** to confirm whether the support leg **(9)** is fully in contact with the floor.

NOTE: Try to avoid using a thick and soft car floor mat under the support leg.

6. Instruction for Stature 40-105cm



6. Instruction for Stature 40-105cm

- 5 Adjust the seat direction by pulling the rotation release handle **(13)** and turn the seat to the side-facing position for easier access when placing your child into the seat after installation. You can also rotate the seat by voice commands or touch buttons.
- 6 Press the harness release button **(12)** and pull the shoulder straps **(5)** forward as far as possible to loosen them.
- 7 Open the buckle **(11)** by pressing the red button, then put the buckle tongues onto the magnets on the headrest **(2)**.

NOTE: If your baby's stature is $\leq 75\text{cm}$, please install the newborn insert.
If your baby's stature is $75\text{cm} < X \leq 125\text{cm}$, please take out the newborn insert.

- 8 Pull headrest adjusting lever **(15)** to adjust the headrest **(2)** to the proper position ensures optimal protection for your child in the car seat. The headrest **(2)** must be set so that the shoulder pads **(4)** are at the same level as your child's shoulder or slightly above.

NOTE: Ensure the child's head is positioned in the center of the headrest.

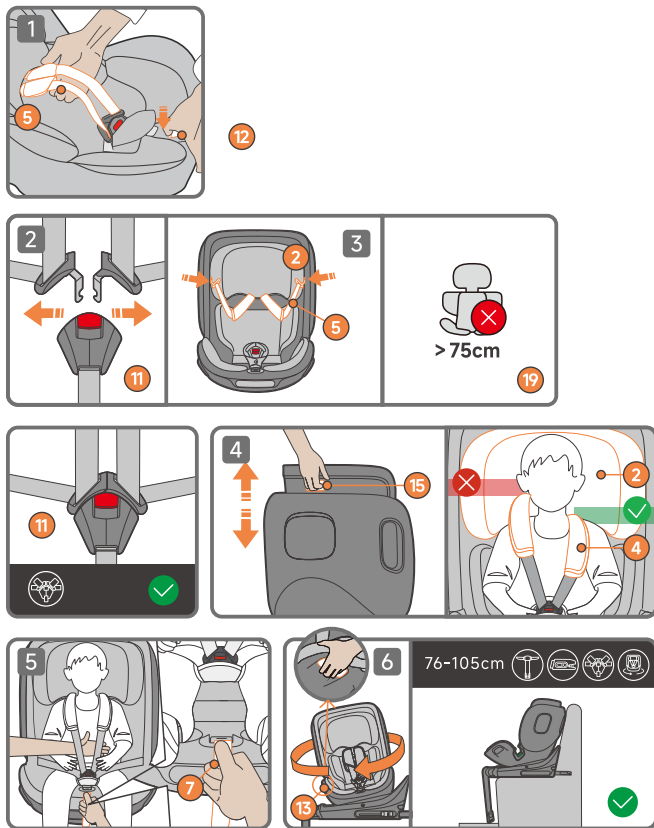
- 9 Guide the buckle tongues together and engage them before inserting them into the buckle **(11)**. Make sure you hear a "click" sound, and buckle indicator will shows white.
- 10 Put one hand in between the baby and the straps. Pull the harness adjustment strap **(7)** until the space between the baby and the straps is about the thickness of your palm.

NOTE: Pull the strap end straight towards you, not upwards or downwards.

- 11 After completing the above steps, pull the rotation release handle **(13)** to turn the car seat to the rear-facing position. You can also rotate the seat by voice commands or touch buttons.

NOTE: For rear-facing installation, the car seat should be in the lowest recline position.

7. Instruction for Stature 76-105cm



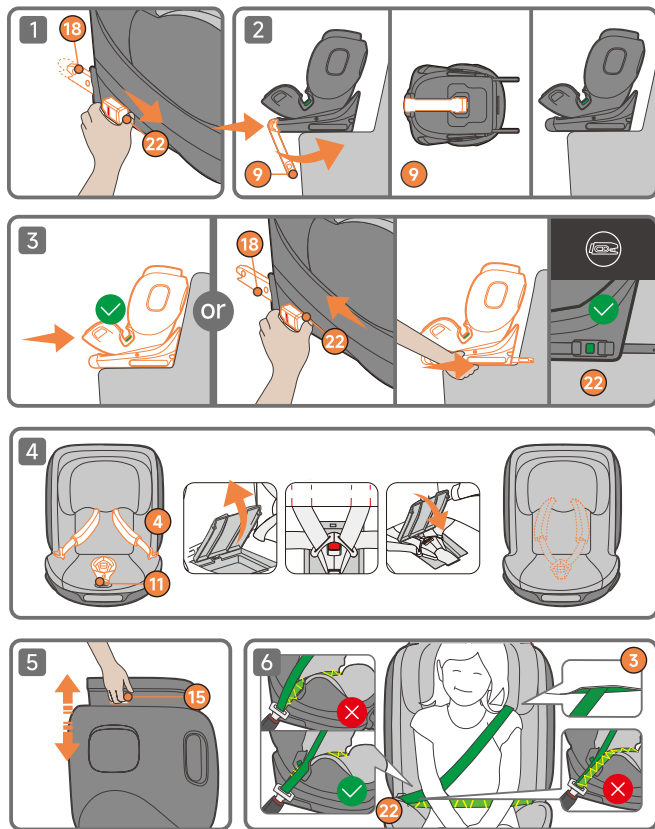
7. Instruction for Stature 76-105cm

- 1 Press the harness release button (12) and pull the shoulder straps (5) forward as far as possible to loosen them.
- 2 Open the buckle (11) by pressing the red button, then put the buckle tongues onto the magnets on the headrest (2).
- 3 Guide the two buckle tongues together and engage them before inserting them into the buckle (11). Make sure you hear a "click" sound and the buckle indicator shows white.
- 4 Pull the headrest adjusting lever (15) upwards to the appropriate height, ensuring the shoulder pads (4) are leveled with your child's shoulders.
- 5 Put one hand in between the baby and the straps. Pull the harness adjustment strap (7) until the space between the baby and the straps is about the thickness of your palm.

NOTE: Pull the strap end straight towards you, not upwards or downwards.

- 6 After completing the above steps, pull the rotation handle (13) to turn the car seat to the forward-facing position. You can also rotate the seat by voice commands or touch buttons.

8. Instruction for Stature 100-125cm



8. Instruction for Stature 100-125cm

- 1** Release the ISOFIX connect locking arms (18).
- 2** Retracting the support leg (9), then rotate the support leg (9) backward to a 45° angle and push the support leg (9) inward until it is fully in place. Finally, tuck the support leg (9) into the slot at the bottom of the seat.
- 3 3-Point Seat Belt Installation**
Ensure the car seat is properly placed in the car without using ISOFIX.
- 3-Point Seat Belt + ISOFIX Installation**
Press the ISOFIX release buttons (22) and slide the ISOFIX connect locking arms (18). When the ISOFIX connect locking arms (18) are successfully inserted into the fixture points, check the ISOFIX green/red indicator to confirm the installation status.
- 4** Hide the shoulder pads (4) behind the headrest cover, open the buckle storage cover, properly assemble the buckle (11), then put it into the buckle storage and close the cover. The buckle storage is located beneath the main fabric cover, which needs to be opened to access the buckle storage.
- 5** Adjust the headrest adjusting lever (15) upwards to the appropriate height.
- 6** Thread the seat belt through the shoulder belt guide (3) and lap belt guide (20).
After ensuring the seat belt is correctly fastened on the baby car seat, lock the seat belt until you hear a "click."

9. Important Safety Precautions



Never leave your child unattended in the child safety seat, especially when not in the vehicle.



For the Protection of All Vehicle Occupants
In the event of an emergency stop or accident, unsecured persons or objects may cause injury to other vehicle occupants. Always ensure the following:

- The backrests of the vehicle seats are locked (e.g., the foldable rear seat bench latch is engaged).
- All heavy or sharp-edged objects in the vehicle (e.g., on the parcel shelf) are secured.
- All passengers in the vehicle have their seat belts fastened. The child safety seat is always secured when in the vehicle, even if no child is being transported.



WARNING! Please be sure to use only the original cover, as the cover is crucial for the secure operation of the system.

Replacement seat covers are available from your retailer, agent, or the manufacturer.



The child seat must not be used without the seat cover.

Caution: When cleaning the seat, ensure that the body of the seat does not come into contact with water. There is a high probability that any electronic components will malfunction if they get wet.

10. Care and Cleaning

- Regularly inspect all components for any signs of damage. Verify the proper functioning of all mechanical parts regularly.
- To avoid damage or breakage, ensure the child seat does not become trapped in car doors, seat tracks, or other vehicle mechanisms.
- If the child seat sustains damage (e.g., from being dropped), it must be inspected by the manufacturer for safety assurance.

Care For Harness Buckle

- The functionality of the harness buckle is essential for your child's safety. Malfunctions are typically caused by the buildup of dirt and dust.

Notes for Cleaning the Car Seat

- To maintain the proper functionality of the car seat, please ensure that only original replacement seat covers are used. Replacement seat covers are essential for the correct performance of the car seat and are available from your retailer or authorized branches.
- The cover can be removed and hand-washed in 40°C warm water using a mild detergent. Machine washing is strictly prohibited. For leather components, spot cleaning with a damp cloth is required and prolonged soaking must be avoided.
- The cover's colors may fade if washed at temperatures higher than 40°C. Do not spin dry, and never use an electric dryer as the fabric may separate from the padding.

To Maintain Optimal Protection

- In the event of a collision at a speed exceeding 10 km/h, the child safety seat may incur damage that is not immediately visible.
- It is important to replace the child seat after such incidents to ensure continued safety. Proper disposal of the damaged seat is required.

11. Warranty

We provide a 7-year warranty for this child car seat against manufacturing or material defects, and a 2-year warranty for the electronic components. The warranty period begins on the date of purchase. To validate the warranty, please keep the invoice and register your product on welldon.com.

In the event of a warranty claim, the invoice must be returned along with the product. The warranty applies only to baby safety car seats that have been properly handled and sent to us in a clean condition.

The Warranty Does Not Cover:

- Natural signs of wear and damage resulting from excessive stress.
- Damage resulting from inappropriate or improper use.
- Color fastness may diminish when exposed to UV radiation. However, all fabrics fade when exposed to UV radiation. This is not a material defect but a normal sign of wear that is not covered by the warranty.
- Buckle malfunction is often due to the accumulation of dirt and dust, which may prevent it from working properly. If this occurs, please check if you can clean it yourself without damaging the installation. If cleaning does not resolve the issue, please contact after sales service.
- Abnormal function resulting from liquid intrusion, including but not limited to water immersion and beverage spills, is excluded from warranty coverage.
- Circuit failure or component damage caused by the use of non-standard, unofficial charging equipment is also not covered under the warranty.
- Any unauthorized disassembly, modification, or repair, including operations performed by third parties, will result in an automatic forfeiture of warranty eligibility.

For warranty claims, please contact your retailer directly. They will provide the necessary advice and support. When processing claims, product-specific depreciation rates will be applied. Please refer to our General Terms and Conditions, which are available from your retailer.

12. Disposing Of Old Electronic Equipment

Important Note:

- If a product displays the symbol of a crossed out rubbish bin, this means it is included in Directive 2002/96/EC.
- All electrical and electronic equipment should be disposed of separately from the municipal waste collection service, through collection points designated by the government or local authorities.
- Proper collection and treatment of unserviceable devices helps to prevent potential risks to the environment and public health.

For more information on how to dispose of your old electrical and electronic equipment, please contact your local council, your household waste disposal service or the shop where you purchased the product.



13. Safety Checklist

- ☒ Did you read and understand the vehicle owner's manual, this user's manual, and all labels found on this Child Restraint?
- ☒ Is the Child Restraint Rear-Facing in an approved vehicle seat location?
- ☒ Is the harness adjusted to the correct position according to the size of the baby?
- ☒ Is the buckle strap snug against the child but not under the child?
- ☒ Before installing the seat, can the Hawk-Eye installation detection system be used normally?
- ☒ Is the child's height between 40 and 125 cm?
- ☒ Are all the indicator lights on the car seat green before the vehicle starts moving?

Is the seat installed in a forward-facing or rearward-facing position according to baby's stature before driving?

If you answered YES to all these questions, you are good to go, and please DRIVE SAFELY!

Summer Headrest Position Reference

If your baby's stature is ≤75cm, please install the newborn insert .

If your baby's stature is 75<X≤125cm, please take out the newborn insert.

Height(cm) /Position	1	2	3	4	5	6	7	8	9	10	11	12	13
40-50	☆	☆	☆										
45-55	☆	☆	☆										
50-60	☆	☆	☆										
55-65	☆	☆	☆										
60-70		☆	☆	☆									
65-75		☆	☆	☆									
70-80			☆	☆	☆								
75-85			☆	☆	☆								
80-90				☆	☆	☆							
85-95				☆	☆	☆							
90-100				☆	☆	☆							
95-105						☆							
100-110					☆	☆	☆						
105-115						☆	☆	☆					
110-120						☆	☆	☆					
115-125							☆	☆	☆	☆			

Note: Manual measurements may vary slightly. The dummy's height is for reference purposes only.

Winter Headrest Position Reference

If your baby's stature is ≤75cm, please install the newborn insert .

If your baby's stature is 75<X≤125cm, please take out the newborn insert.

Height(cm) /Position	1	2	3	4	5	6	7	8	9	10	11	12	13
40-50		☆	☆	☆									
45-55		☆	☆	☆									
50-60		☆	☆	☆									
55-65		☆	☆	☆									
60-70			☆	☆	☆								
65-75			☆	☆	☆								
70-80					☆	☆	☆	☆					
75-85				☆	☆	☆							
80-90					☆	☆	☆						
85-95					☆	☆	☆						
90-100					☆	☆	☆						
95-105						☆							
100-110						☆	☆	☆					
105-115							☆	☆	☆				
110-120							☆	☆	☆				
115-125								☆	☆	☆	☆		

Note: Manual measurements may vary slightly. The dummy's height is for reference purposes only.